

DHODH-IN-16

Chemical Properties

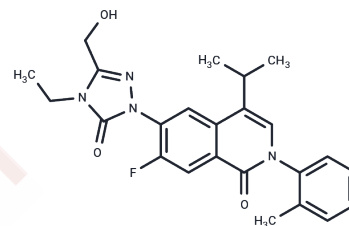
CAS No. : 2511248-11-4

Formula: C₂₄H₂₅FN₄O₃

Molecular Weight: 436.48

Storage: Powder: -20°C for 3 years | In solvent: -80°C for 1 year

Actual storage temperature shall be subject to the COA.



Biological Description

Description	DHODH-IN-16 is an effective inhibitor of dihydroorotate dehydrogenase (DHODH, IC ₅₀ = 0.396 nM for human).
Targets(IC ₅₀)	Dehydrogenase,DNA/RNA Synthesis
In vitro	DHODH-IN-16 inhibited the growth of MOLM-13 cells effectively (IC ₅₀ = 0.2 nM) [1] .

Solubility Information

Solubility	DMSO: 95 mg/mL (217.65 mM),Sonication is recommended. (< 1 mg/ml refers to the product slightly soluble or insoluble)
In vivo Formulation	10% DMSO+40% PEG300+5% Tween 80+45% Saline: 3.3 mg/mL (7.56 mM),Sonication is recommended. <i>Please add the solvents sequentially, clarifying the solution as much as possible before adding the next one. Dissolve by heating and/or sonication if necessary. Working solution is recommended to be prepared and used immediately. The formulation provided above is for reference purposes only. In vivo formulations may vary and should be modified based on specific experimental conditions.</i>

Preparing Stock Solutions

	1mg	5mg	10mg
1 mM	2.2911 mL	11.4553 mL	22.9106 mL
5 mM	0.4582 mL	2.2911 mL	4.5821 mL
10 mM	0.2291 mL	1.1455 mL	2.2911 mL
50 mM	0.0458 mL	0.2291 mL	0.4582 mL

Please select the appropriate solvent to prepare the stock solution, according to the solubility of the product in different solvents. Please use it as soon as possible.

Note: The dilution table applies only to solid products. For liquid products, please calculate the stock solution based on the stated concentration and/or density.

Reference

Scott Kuduk, et al. Dihydroorotate dehydrogenase inhibitors. WO2020212897A1.

Inhibitor · Natural Compounds · Compound Libraries · Recombinant Proteins

This product is for Research Use Only · Not for Human or Veterinary or Therapeutic Use

Tel:781-999-4286 E_mail:info@targetmol.com Address:34 Washington Street,Wellesley Hills,MA 02481