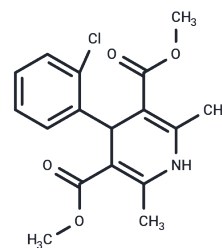


Amlodipine besilate impurity G

Chemical Properties

CAS No. :	43067-01-2
Formula:	C ₁₇ H ₁₈ ClNO ₄
Molecular Weight:	335.78
Storage:	Powder: -20°C for 3 years In solvent: -80°C for 1 year Actual storage temperature shall be subject to the COA.



Biological Description

Description	Amlodipine besilate impurity G is a Calcium Channel antagonist with potential application in the study of neurological diseases and is an impurity in the synthesis of Amlodipine besilate.
Targets(IC50)	Others, Calcium Channel

Solubility Information

Solubility	DMSO: Soluble, (< 1 mg/ml refers to the product slightly soluble or insoluble)
------------	--

Preparing Stock Solutions

	1mg	5mg	10mg
1 mM	2.9781 mL	14.8907 mL	29.7814 mL
5 mM	0.5956 mL	2.9781 mL	5.9563 mL
10 mM	0.2978 mL	1.4891 mL	2.9781 mL
50 mM	0.0596 mL	0.2978 mL	0.5956 mL

Please select the appropriate solvent to prepare the stock solution, according to the solubility of the product in different solvents. Please use it as soon as possible.

Note: The dilution table applies only to solid products. For liquid products, please calculate the stock solution based on the stated concentration and/or density.

Reference

- Hanon O, Caillard L, Chaussade E, Hernandorena I, Bouilly C. Blood pressure-lowering efficacy of indapamide SR/amlodipine combination in older patients with hypertension: A post hoc analysis of the NESTOR trial (Natlirix SR vs Enalapril in Hypertensive Type 2 Diabetics With Microalbuminuria). *J Clin Hypertens (Greenwich)*. 2017 Oct;19(10):965-972. doi: 10.1111/jch.13053. Epub 2017 Jul 18. PubMed PMID: 28721700.
- Shirley M, McCormack PL. Perindopril/amlodipine (Prestalia®): a review in hypertension. *Am J Cardiovasc Drugs*. 2015 Oct;15(5):363-70. doi: 10.1007/s40256-015-0144-1. Review. PubMed PMID: 26341621.
- Son H, Lee D, Lim LA, Jang SB, Roh H, Park K. Development of a pharmacokinetic interaction model for co-administration of simvastatin and amlodipine. *Drug Metab Pharmacokinet*. 2014;29(2):120-8. Epub 2013 Aug 20. PubMed PMID: 23965645.
- Rakugi H, Ogihara T, Miyata Y, Sasai K, Totsuka N. Evaluation of the efficacy and tolerability of combination therapy with candesartan cilexetil and amlodipine besilate compared with candesartan cilexetil monotherapy and amlodipine besilate monotherapy in Japanese patients with mild-to-moderate essential hypertension: a multicenter, 12-week, randomized, double-blind, placebo-controlled, parallel-group study. *Clin Ther*. 2012 Apr;34(4):838-48. doi: 10.1016/j.clinthera.2012.02.015. Epub 2012 Mar 21. PubMed PMID: 22440192.

Inhibitor · Natural Compounds · Compound Libraries · Recombinant Proteins

This product is for Research Use Only · Not for Human or Veterinary or Therapeutic Use

Tel:781-999-4286 E_mail:info@targetmol.com Address:34 Washington Street,Wellesley Hills,MA 02481