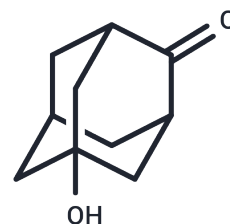


Idramantone

Chemical Properties

CAS No. : 20098-14-0
 Formula: C₁₀H₁₄O₂
 Molecular Weight: 166.22
 Storage: Powder: -20°C for 3 years | In solvent: -80°C for 1 year
Actual storage temperature shall be subject to the COA.



Biological Description

Description	Idramantone (Kemantane) is an immune agonist.
Targets(IC50)	Others
Kinase Assay	Assays with human placental aromatase: Microsomes are prepared from human placenta and stored at -80°C. The rate of aromatization is determined by measuring the tritiated water released from [1β-3H]A. The assay is carried out in a final volume of 1 mL, in 10 mM phosphate buffer, pH 7.5, containing 100 mM KCl, 1 mM EDTA, 1 mM dithiothreitol, 100 μM NADPH, the enzyme preparation and the appropriate concentrations of Exemestane (in duplicate) and the substrate. After a 10 min incubation at 37 °C, the assay is terminated by the addition of 4 mL cold chloroform. The aqueous phase is treated with a charcoal suspension, the supernatant is removed and counted for radioactivity by liquid scintillation in Rialuma. For the determination of the IC50 values, various concentrations of Exemestane are incubated with 20 μg of microsomal protein, in the presence of a fixed amount (50 nM) of [3H]A.

Solubility Information

Solubility	Ethanol: 31 mg/mL (186.5 mM),Sonication is recommended. H ₂ O: 30 mg/mL (180.48 mM),Sonication is recommended. DMSO: 45 mg/mL (270.73 mM),Sonication is recommended. (< 1 mg/ml refers to the product slightly soluble or insoluble)
------------	----------------------------------------------------------------------------------------------------------------------------------------------------------------------------------------------------------------------------------------------------------

Preparing Stock Solutions

	1mg	5mg	10mg
1 mM	6.0161 mL	30.0806 mL	60.1612 mL
5 mM	1.2032 mL	6.0161 mL	12.0322 mL
10 mM	0.6016 mL	3.0081 mL	6.0161 mL
50 mM	0.1203 mL	0.6016 mL	1.2032 mL

Please select the appropriate solvent to prepare the stock solution, according to the solubility of the product in different solvents. Please use it as soon as possible.

Note: The dilution table applies only to solid products. For liquid products, please calculate the stock solution based on the stated concentration and/or density.

Reference

Mirzoian NR, et al. Eksp Klin Farmakol. 2013; 76(6): 7-10.

Inhibitor · Natural Compounds · Compound Libraries · Recombinant Proteins

This product is for Research Use Only · Not for Human or Veterinary or Therapeutic Use

Tel:781-999-4286 E_mail:info@targetmol.com Address:34 Washington Street,Wellesley Hills,MA 02481