

## PF-CBP1 hydrochloride

### Chemical Properties

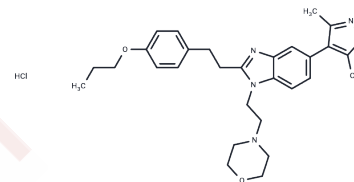
CAS No. : 2070014-93-4

Formula: C<sub>29</sub>H<sub>37</sub>ClN<sub>4</sub>O<sub>3</sub>

Molecular Weight: 525.08

Storage: Powder: -20°C for 3 years | In solvent: -80°C for 1 year

Actual storage temperature shall be subject to the COA.



### Biological Description

Description	PF-CBP1 hydrochloride (PF-CBP1 HCl) is a highly selective inhibitor of the bromodomain of CREB-binding protein(CREBBP).It inhibits CREBBP and p300 bromodomains with IC50 of 125 and 363 nM respectively.
Targets(IC50)	Epigenetic Reader Domain,Histone Acetyltransferase
In vitro	PF-CBP1 modulates key inflammatory genes in primary macrophages. PF-CBP1 down regulates RGS4 in neurons, a target linked to Parkinson's disease.It is 139-fold selective over BRD4 in the biochemical assays and >105-fold selective by ITC.PF-CBP1 is also a potent inhibitor of EP300 and possesses no cytotoxicity in macrophages, and hepatotoxicity in cell-based models as long as the concentration is not very high[1].

### Solubility Information

Solubility	DMSO: 45 mg/mL (85.7 mM),Sonication is recommended. (< 1 mg/ml refers to the product slightly soluble or insoluble)
In vivo Formulation	10% DMSO+40% PEG300+5% Tween 80+45% Saline: 2 mg/mL (3.81 mM),Sonication is recommended. <i>Please add the solvents sequentially, clarifying the solution as much as possible before adding the next one. Dissolve by heating and/or sonication if necessary. Working solution is recommended to be prepared and used immediately. The formulation provided above is for reference purposes only. In vivo formulations may vary and should be modified based on specific experimental conditions.</i>

### Preparing Stock Solutions

---

	<b>1mg</b>	<b>5mg</b>	<b>10mg</b>
1 mM	1.9045 mL	9.5224 mL	19.0447 mL
5 mM	0.3809 mL	1.9045 mL	3.8089 mL
10 mM	0.1904 mL	0.9522 mL	1.9045 mL
50 mM	0.0381 mL	0.1904 mL	0.3809 mL

---

Please select the appropriate solvent to prepare the stock solution, according to the solubility of the product in different solvents. Please use it as soon as possible.

Note: The dilution table applies only to solid products. For liquid products, please calculate the stock solution based on the stated concentration and/or density.

#### Reference

Eugene L, et al. Chem Biol. 2015, 22(12):1588-1596.

**Inhibitor · Natural Compounds · Compound Libraries · Recombinant Proteins**

This product is for Research Use Only · Not for Human or Veterinary or Therapeutic Use

Tel:781-999-4286 E\_mail:info@targetmol.com Address:34 Washington Street,Wellesley Hills,MA 02481