

## MAP kinase fragment [Multiple species]

## Chemical Properties

CAS No. :

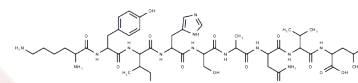
Formula: C<sub>48</sub>H<sub>77</sub>N<sub>13</sub>O<sub>13</sub>

Molecular Weight: 1044.2

Keep away from moisture

Storage: Powder: -20°C for 3 years | In solvent: -80°C for 1 year

Actual storage temperature shall be subject to the COA.



## Biological Description

Description	This Mitogen-activated protein kinase (MAP kinase) fragment has a peptide sequence of Lys-Tyr-Ile-His-Ser-Ala-Asn-Val-Leu. The MAP kinases are serine/threonine-specific protein kinases belonging to the CMGC (CDK/MAPK/GSK3/CLK) kinase group.
Targets(IC50)	Others
In vitro	MAPK pathways are a collection of protein signaling cascades stimulated by a wide variety of extracellular signals, including growth factors, cytokines, and environmental stresses. Upon activation, MAPK pathways regulate many fundamental cellular functions, including differentiation, proliferation, and apoptosis, through the activation of specific transcription factors and other regulatory proteins. MAPKs are involved in directing cellular responses to a diverse array of stimuli, such as mitogens, osmotic stress, heat shock, and proinflammatory cytokines. MAPK proteins have been repeatedly implicated in the pathogenesis of cancer and autoimmune diseases, leading to their selection as targets for drug development.

## Solubility Information

Solubility	DMSO: ≥104.4 mg/mL, Sonication is recommended. (< 1 mg/ml refers to the product slightly soluble or insoluble)
------------	---

### Preparing Stock Solutions

---

	<b>1mg</b>	<b>5mg</b>	<b>10mg</b>
1 mM	0.9577 mL	4.7884 mL	9.5767 mL
5 mM	0.1915 mL	0.9577 mL	1.9153 mL
10 mM	0.0958 mL	0.4788 mL	0.9577 mL
50 mM	0.0192 mL	0.0958 mL	0.1915 mL

---

Please select the appropriate solvent to prepare the stock solution, according to the solubility of the product in different solvents. Please use it as soon as possible.

Note: The dilution table applies only to solid products. For liquid products, please calculate the stock solution based on the stated concentration and/or density.

**Inhibitor · Natural Compounds · Compound Libraries · Recombinant Proteins**

This product is for Research Use Only · Not for Human or Veterinary or Therapeutic Use

Tel:781-999-4286 E\_mail:info@targetmol.com Address:34 Washington Street,Wellesley Hills,MA 02481