

ANP (1-11), rat

Chemical Properties

CAS No. :

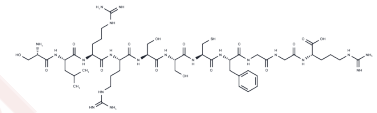
Formula: C49H84N20O15S

Molecular Weight: 1225.38

Keep away from moisture

Storage: Powder: -20°C for 3 years | In solvent: -80°C for 1 year

Actual storage temperature shall be subject to the COA.



Biological Description

Description	Atrial Natriuretic Peptide (ANP) has the sequence of H-Ser-Leu-Arg-Arg-Ser-Ser-Cys-Phe-Gly-Gly-Arg-OH, is a 28 amino acid peptide. ANP is a powerful vasodilator, and a protein (polypeptide) hormone secreted by heart muscle cells. It is involved in the homeostatic control of body water, sodium, potassium, and fat (adipose tissue). It is released by muscle cells in the upper chambers (atria) of the heart (atrial myocytes), in response to high blood pressure. ANP acts to reduce the water, sodium, and adipose loads on the circulatory system, thereby reducing blood pressure.
Targets(IC50)	Others

Solubility Information

Solubility	DMSO: ≥ 122.5 mg/mL, Sonication is recommended. (< 1 mg/ml refers to the product slightly soluble or insoluble)
------------	--

Preparing Stock Solutions

	1mg	5mg	10mg
1 mM	0.8161 mL	4.0804 mL	8.1607 mL
5 mM	0.1632 mL	0.8161 mL	1.6321 mL
10 mM	0.0816 mL	0.408 mL	0.8161 mL
50 mM	0.0163 mL	0.0816 mL	0.1632 mL

Please select the appropriate solvent to prepare the stock solution, according to the solubility of the product in different solvents. Please use it as soon as possible.

Note: The dilution table applies only to solid products. For liquid products, please calculate the stock solution based on the stated concentration and/or density.

Reference

Purushothaman, K. R., Krishnan, P., Purushothaman, M., et al. Expression of angiotensin-converting enzyme 2 and its end product angiotensin 1-7 is increased in diabetic atheroma: Implications for inflammation and neovascularization. *Cardiovascular Pathology* 22, 42-48 (2013).

Marcus, Y., Shefer, G., Sasson, K., et al. Angiotensin 1-7 as means to prevent the metabolic syndrome: Lessons from the fructose-fed model. *Diabetes* 62, 1121-1130 (2013).

Inhibitor · Natural Compounds · Compound Libraries · Recombinant Proteins

This product is for Research Use Only · Not for Human or Veterinary or Therapeutic Use

Tel: 781-999-4286 E_mail: info@targetmol.com Address: 34 Washington Street, Wellesley Hills, MA 02481