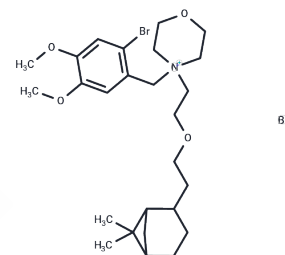


Pinaverium bromide

Chemical Properties

CAS No. :	53251-94-8
Formula:	C ₂₆ H ₄₁ Br ₂ N ₄ O ₄
Molecular Weight:	591.42
Storage:	Powder: -20°C for 3 years In solvent: -80°C for 1 year Actual storage temperature shall be subject to the COA.



Biological Description

Description	Pinaverium bromide is an calcium channel blocker with Antispasmodic and effectively relieves pain, diarrhea and intestinal discomfort.
Targets(IC50)	Calcium Channel

Solubility Information

Solubility	DMSO: 45 mg/mL (76.09 mM),Sonication is recommended. (< 1 mg/ml refers to the product slightly soluble or insoluble)
In vivo Formulation	10% DMSO+40% PEG300+5% Tween 80+45% Saline: 2 mg/mL (3.38 mM),Sonication is recommended. <i>Please add the solvents sequentially, clarifying the solution as much as possible before adding the next one. Dissolve by heating and/or sonication if necessary. Working solution is recommended to be prepared and used immediately. The formulation provided above is for reference purposes only. In vivo formulations may vary and should be modified based on specific experimental conditions.</i>

Preparing Stock Solutions

	1mg	5mg	10mg
1 mM	1.6908 mL	8.4542 mL	16.9085 mL
5 mM	0.3382 mL	1.6908 mL	3.3817 mL
10 mM	0.1691 mL	0.8454 mL	1.6908 mL
50 mM	0.0338 mL	0.1691 mL	0.3382 mL

Please select the appropriate solvent to prepare the stock solution, according to the solubility of the product in different solvents. Please use it as soon as possible.

Note: The dilution table applies only to solid products. For liquid products, please calculate the stock solution based on the stated concentration and/or density.

Reference

Action of Pinaverium Bromide, a Calcium-Antagonist, on Gastrointestinal Motility Disorders

Yun-Fengxu J X . Effect of pinaverium bromide on stress-induced colonic smooth muscle contractility disorder in rats[J].2003, 9(3):557-561.

Inhibitor · Natural Compounds · Compound Libraries · Recombinant Proteins

This product is for Research Use Only· Not for Human or Veterinary or Therapeutic Use

Tel:781-999-4286 E_mail:info@targetmol.com Address:34 Washington Street,Wellesley Hills,MA 02481