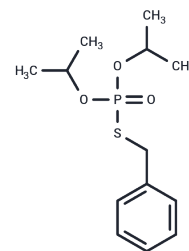


## Iprobenfos

## Chemical Properties

CAS No. :	26087-47-8
Formula:	C <sub>13</sub> H <sub>21</sub> O <sub>3</sub> PS
Molecular Weight:	288.34
Storage:	Powder: -20°C for 3 years   In solvent: -80°C for 1 year Actual storage temperature shall be subject to the COA.



## Biological Description

Description	Iprobenfos (IBP) is used as an organophosphorus pesticide.
Targets(IC50)	Others,Antifungal,Cholinesterase (ChE)

## Preparing Stock Solutions

	1mg	5mg	10mg
1 mM	3.4681 mL	17.3406 mL	34.6813 mL
5 mM	0.6936 mL	3.4681 mL	6.9363 mL
10 mM	0.3468 mL	1.7341 mL	3.4681 mL
50 mM	0.0694 mL	0.3468 mL	0.6936 mL

Please select the appropriate solvent to prepare the stock solution, according to the solubility of the product in different solvents. Please use it as soon as possible.

Note: The dilution table applies only to solid products. For liquid products, please calculate the stock solution based on the stated concentration and/or density.

## Reference

- Kwon YS, Nguyen VT, Park JG, Gu MB. Detection of iprobenfos and edifenphos using a new multi-aptasensor. *Anal Chim Acta*. 2015 Apr 8;868:60-6. doi: 10.1016/j.aca.2015.02.020. Epub 2015 Feb 12. PubMed PMID: 25813235.
- Tao LM, Yang JZ, Zhuang PJ, Tang ZH. Effect of a mixture of iprobenfos and malathion on the development of malathion resistance in the mosquito *Culex pipiens pallens* Coq. *Pest Manag Sci*. 2006 Jan;62(1):86-90. PubMed PMID: 16235270.
- Jung JH, Addison RF, Shim WJ. Characterization of cholinesterases in marbled sole, *Limanda yokohamae*, and their inhibition in vitro by the fungicide iprobenfos. *Mar Environ Res*. 2007 Jun;63(5):471-8. Epub 2007 Jan 4. PubMed PMID: 17300836.
- Añasco NC, Koyama J, Uno S. Pesticide residues in coastal waters affected by rice paddy effluents temporarily stored in a wastewater reservoir in southern Japan. *Arch Environ Contam Toxicol*. 2010 Feb;58(2):352-60. doi: 10.1007/s00244-009-9364-1. Epub 2009 Jul 17. PubMed PMID: 19609592.

**Inhibitor · Natural Compounds · Compound Libraries · Recombinant Proteins**

This product is for Research Use Only · Not for Human or Veterinary or Therapeutic Use

Tel:781-999-4286 E\_mail:info@targetmol.com Address:34 Washington Street,Wellesley Hills,MA 02481