

JWU-A021

Chemical Properties

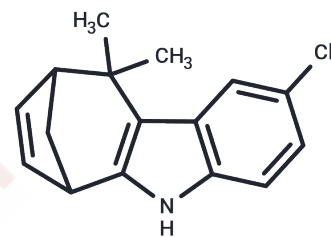
CAS No. : 1403610-23-0

Formula: C₁₆H₁₆ClN

Molecular Weight: 257.76

Storage: Powder: -20°C for 3 years | In solvent: -80°C for 1 year

Actual storage temperature shall be subject to the COA.



Biological Description

| | |
|---------------|--|
| Description | JWU-A021 is a particularly potent stimulant of glucagon-like peptides-1 (GLP-1) secretion in vivo. |
| Targets(IC50) | Others |

Preparing Stock Solutions

| | 1mg | 5mg | 10mg |
|-------|-----------|------------|------------|
| 1 mM | 3.8796 mL | 19.3979 mL | 38.7958 mL |
| 5 mM | 0.7759 mL | 3.8796 mL | 7.7592 mL |
| 10 mM | 0.388 mL | 1.9398 mL | 3.8796 mL |
| 50 mM | 0.0776 mL | 0.388 mL | 0.7759 mL |

Please select the appropriate solvent to prepare the stock solution, according to the solubility of the product in different solvents. Please use it as soon as possible.

Note: The dilution table applies only to solid products. For liquid products, please calculate the stock solution based on the stated concentration and/or density.

Reference

Chepurny OG, Leech CA, Tomanik M, DiPoto MC, Li H, Han X, Meng Q, Cooney RN, Wu J, Holz GG. Synthetic small molecule GLP-1 secretagogues prepared by means of a three-component indole annulation strategy. Sci Rep. 2016 Jun 29;6:28934. doi: 10.1038/srep28934. PubMed PMID: 27352904; PubMed Central PMCID: PMC4926213.

Inhibitor · Natural Compounds · Compound Libraries · Recombinant Proteins

This product is for Research Use Only · Not for Human or Veterinary or Therapeutic Use

Tel:781-999-4286 E_mail:info@targetmol.com Address:34 Washington Street,Wellesley Hills,MA 02481