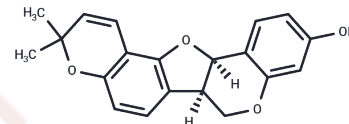


## Phaseolin

## Chemical Properties

CAS No. :	13401-40-6
Formula:	C <sub>20</sub> H <sub>18</sub> O <sub>4</sub>
Molecular Weight:	322.36
Storage:	Powder: -20°C for 3 years   In solvent: -80°C for 1 year Actual storage temperature shall be subject to the COA.



## Biological Description

Description	Phaseolin, a protein from red kidney bean ( <i>Phaseolus vulgaris</i> L.), plays a pivotal role in hypersensitivity induction.
-------------	--

## Solubility Information

Solubility	DMSO: Soluble, (< 1 mg/ml refers to the product slightly soluble or insoluble)
------------	---

## Preparing Stock Solutions

	1mg	5mg	10mg
1 mM	3.1021 mL	15.5106 mL	31.0212 mL
5 mM	0.6204 mL	3.1021 mL	6.2042 mL
10 mM	0.3102 mL	1.5511 mL	3.1021 mL
50 mM	0.062 mL	0.3102 mL	0.6204 mL

Please select the appropriate solvent to prepare the stock solution, according to the solubility of the product in different solvents. Please use it as soon as possible.

Note: The dilution table applies only to solid products. For liquid products, please calculate the stock solution based on the stated concentration and/or density.

### Reference

De Marchis F, Bellucci M, Pompa A. Phaseolin expression in tobacco chloroplast reveals an autoregulatory mechanism in heterologous protein translation. *Plant Biotechnol J*. 2016 Feb;14(2):603-14. doi: 10.1111/pbi.12405. Epub 2015 Jun 1. PubMed PMID: 26031839.

Thibeault J, Church J, Ortiz-Perez B, Addo S, Hill S, Khalil A, Young M, Xia K, Colón W. Analyzing bean extracts using time-dependent SDS trapping to quantify the kinetic stability of phaseolin proteins. *Biochem Biophys Res Commun*. 2017 Sep 30;491(4):994-999. doi: 10.1016/j.bbrc.2017.07.166. Epub 2017 Aug 1. PubMed PMID: 28774556.

Kumar S, Verma AK, Sharma A, Roy R, Kumar D, Bh G, Tripathi A, Chaudhari BP, Das M, Jain SK, Dwivedi PD. Phaseolin: a 47.5kDa protein of red kidney bean (*Phaseolus vulgaris* L.) plays a pivotal role in hypersensitivity induction. *Int Immunopharmacol*. 2014 Mar;19(1):178-90. doi: 10.1016/j.intimp.2014.01.014. Epub 2014 Jan 24. PubMed PMID: 24468678.

de Toledo NM, Rocha LC, da Silva AG, Canniatti Brazaca SG. Interaction and digestibility of phaseolin/polyphenol in the common bean. *Food Chem*. 2013 Jun 1;138(2-3):776-80. doi: 10.1016/j.foodchem.2012.11.079. Epub 2012 Nov 28. PubMed PMID: 23411175.

**Inhibitor · Natural Compounds · Compound Libraries · Recombinant Proteins**

This product is for Research Use Only · Not for Human or Veterinary or Therapeutic Use

Tel:781-999-4286 E\_mail:info@targetmol.com Address:34 Washington Street,Wellesley Hills,MA 02481