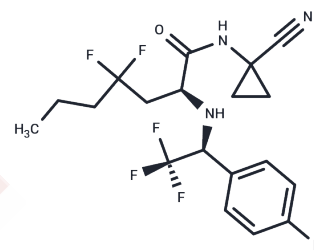


Cathepsin Inhibitor 2

Chemical Properties

CAS No. :	1017931-53-1
Formula:	C ₁₉ H ₂₁ F ₆ N ₃ O
Molecular Weight:	421.38
Storage:	Powder: -20°C for 3 years In solvent: -80°C for 1 year Actual storage temperature shall be subject to the COA.



Biological Description

Description	Cathepsin Inhibitor 2 is a potent Cathepsin S inhibitor (K _i : <20 nM).
Targets(IC ₅₀)	Cysteine Protease
In vitro	Cathepsin Inhibitor 2 potently inhibits Cathepsin S, Cathepsin F, Cathepsin L, and Cathepsin B with K _i s of <20 nM, 21-500 nM, 21-500 nM, and 21-500 nM, respectively.

Preparing Stock Solutions

	1mg	5mg	10mg
1 mM	2.3732 mL	11.8658 mL	23.7315 mL
5 mM	0.4746 mL	2.3732 mL	4.7463 mL
10 mM	0.2373 mL	1.1866 mL	2.3732 mL
50 mM	0.0475 mL	0.2373 mL	0.4746 mL

Please select the appropriate solvent to prepare the stock solution, according to the solubility of the product in different solvents. Please use it as soon as possible.

Note: The dilution table applies only to solid products. For liquid products, please calculate the stock solution based on the stated concentration and/or density.

Reference

LINK, John, O, et al. DI-FLUORO CONTAINING COMPOUNDS AS CYSTEINE PROTEASE INHIBITORS. WO2009123623A1.

Inhibitor · Natural Compounds · Compound Libraries · Recombinant Proteins

This product is for Research Use Only. Not for Human or Veterinary or Therapeutic Use

Tel: 781-999-4286 E_mail: info@targetmol.com Address: 34 Washington Street, Wellesley Hills, MA 02481