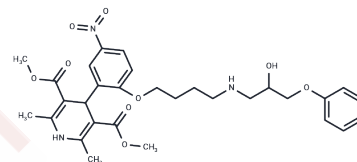


YM 16151-1

Chemical Properties

CAS No. : 103434-30-6
 Formula: C30H37N3O9
 Molecular Weight: 583.63
 Storage: Powder: -20°C for 3 years | In solvent: -80°C for 1 year
 Actual storage temperature shall be subject to the COA.



Biological Description

Description	YM 16151-1 is a biochemical.
Targets(IC50)	Others

Preparing Stock Solutions

	1mg	5mg	10mg
1 mM	1.7134 mL	8.5671 mL	17.1341 mL
5 mM	0.3427 mL	1.7134 mL	3.4268 mL
10 mM	0.1713 mL	0.8567 mL	1.7134 mL
50 mM	0.0343 mL	0.1713 mL	0.3427 mL

Please select the appropriate solvent to prepare the stock solution, according to the solubility of the product in different solvents. Please use it as soon as possible.

Note: The dilution table applies only to solid products. For liquid products, please calculate the stock solution based on the stated concentration and/or density.

Reference

- Uchida W, Shibasaki K, Matsuda Y, Asano M, Takenaka T. Cardiovascular effects of YM-16151-4: a novel calcium entry blocking and selective beta 1-adrenoceptor blocking agent in rats and dogs. J Cardiovasc Pharmacol. 1993 Aug;22(2):247-52. PubMed PMID: 7692165.
- Uchida W, Shibasaki K, Asano M, Takenaka T. Antianginal effects of YM-16151-4 in various experimental angina models. J Cardiovasc Pharmacol. 1993 May;21(5):701-8. PubMed PMID: 7685438.
- Uchida W, Shibasaki K, Asano M, Takenaka T. Cardiovascular effects of YM-16151-1 and its optical isomers: a novel calcium entry blocking and beta 1-adrenoceptor blocking agent. Arch Int Pharmacodyn Ther. 1993 Jan-Feb;321:30-40. PubMed PMID: 8100704.
- Uchida W, Shibasaki K, Asano M. Cardiovascular effects of a novel calcium entry blocking and selective beta 1-adrenoceptor blocking agent, YM-16151-4, in anesthetized and conscious dogs. J Cardiovasc Pharmacol. 1992 Jan;19(1):60-8. PubMed PMID: 1375689.

Inhibitor · Natural Compounds · Compound Libraries · Recombinant Proteins

This product is for Research Use Only · Not for Human or Veterinary or Therapeutic Use

Tel:781-999-4286 E_mail:info@targetmol.com Address:34 Washington Street,Wellesley Hills,MA 02481