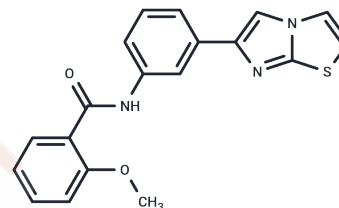


Sirtuin modulator 2

Chemical Properties

CAS No. :	667910-69-2
Formula:	C ₁₉ H ₁₅ N ₃ O ₂ S
Molecular Weight:	349.41
Storage:	Powder: -20°C for 3 years In solvent: -80°C for 1 year Actual storage temperature shall be subject to the COA.



Biological Description

Description	Sirtuin modulator 2 (N-(3-(imidazo[2,1-b]thiazol-6-yl)phenyl)-2-methoxybenzamide) exhibits antidiabetic, anti-inflammatory and antitumor activities.
Targets(IC50)	HIF/HIF Prolyl-Hydroxylase,Sirtuin

Solubility Information

Solubility	DMSO: 50 mg/mL (143.1 mM),Sonication is recommended. (< 1 mg/ml refers to the product slightly soluble or insoluble)
In vivo Formulation	10% DMSO+40% PEG300+5% Tween 80+45% Saline: 2 mg/mL (5.72 mM),Sonication is recommended. <i>Please add the solvents sequentially, clarifying the solution as much as possible before adding the next one. Dissolve by heating and/or sonication if necessary. Working solution is recommended to be prepared and used immediately. The formulation provided above is for reference purposes only. In vivo formulations may vary and should be modified based on specific experimental conditions.</i>

Preparing Stock Solutions

	1mg	5mg	10mg
1 mM	2.862 mL	14.3098 mL	28.6197 mL
5 mM	0.5724 mL	2.862 mL	5.7239 mL
10 mM	0.2862 mL	1.431 mL	2.862 mL
50 mM	0.0572 mL	0.2862 mL	0.5724 mL

Please select the appropriate solvent to prepare the stock solution, according to the solubility of the product in different solvents. Please use it as soon as possible.

Note: The dilution table applies only to solid products. For liquid products, please calculate the stock solution based on the stated concentration and/or density.

Reference

Anthony Boitano, et al. Aryl hydrocarbon receptor antagonists and methods of use thereof for treating various diseases. WO2020051207A2

Inhibitor · Natural Compounds · Compound Libraries · Recombinant Proteins

This product is for Research Use Only · Not for Human or Veterinary or Therapeutic Use

Tel:781-999-4286 E_mail:info@targetmol.com Address:34 Washington Street,Wellesley Hills,MA 02481