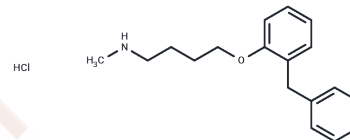


## Bifemelane hydrochloride

## Chemical Properties

CAS No. :	62232-46-6
Formula:	C <sub>18</sub> H <sub>23</sub> NO·HCl
Molecular Weight:	305.84
Storage:	Powder: -20°C for 3 years   In solvent: -80°C for 1 year Actual storage temperature shall be subject to the COA.



## Biological Description

Description	Bifemelane hydrochloride is a MAO inhibitor
Targets(IC50)	MAO, Monoamine Oxidase

## Solubility Information

Solubility	H <sub>2</sub> O: < 30.58 mg/mL, Sonication is recommended. DMSO: 55 mg/mL (179.83 mM), Sonication is recommended. (< 1 mg/ml refers to the product slightly soluble or insoluble)
In vivo Formulation	10% DMSO+40% PEG300+5% Tween 80+45% Saline: 2 mg/mL (6.54 mM), Sonication is recommended. <i>Please add the solvents sequentially, clarifying the solution as much as possible before adding the next one. Dissolve by heating and/or sonication if necessary. Working solution is recommended to be prepared and used immediately. The formulation provided above is for reference purposes only. In vivo formulations may vary and should be modified based on specific experimental conditions.</i>

## Preparing Stock Solutions

	1mg	5mg	10mg
1 mM	3.2697 mL	16.3484 mL	32.6968 mL
5 mM	0.6539 mL	3.2697 mL	6.5394 mL
10 mM	0.327 mL	1.6348 mL	3.2697 mL
50 mM	0.0654 mL	0.327 mL	0.6539 mL

Please select the appropriate solvent to prepare the stock solution, according to the solubility of the product in different solvents. Please use it as soon as possible.

Note: The dilution table applies only to solid products. For liquid products, please calculate the stock solution based on the stated concentration and/or density.

Reference

Yoshida Y , Kumagai H , Ohkubo Y , et al. Effects of bifemelane on the calcium level and ATP release of the human origin astrocyte clonal cell.[J]. Journal of Pharmacological Sciences, 2006, 102(1):121-128.

**Inhibitor · Natural Compounds · Compound Libraries · Recombinant Proteins**

This product is for Research Use Only· Not for Human or Veterinary or Therapeutic Use

Tel:781-999-4286 E\_mail:info@targetmol.com Address:34 Washington Street,Wellesley Hills,MA 02481