

WOBE437

Chemical Properties

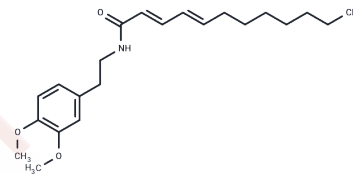
CAS No. : 2108100-73-6

Formula: C₂₂H₃₃NO₃

Molecular Weight: 359.5

Storage: Powder: -20°C for 3 years | In solvent: -80°C for 1 year

Actual storage temperature shall be subject to the COA.



Biological Description

Description	WOBE437 is a selective endocannabinoid reuptake inhibitor which reduces disease progression in a mouse model of multiple sclerosis
Targets(IC50)	Others

Preparing Stock Solutions

	1mg	5mg	10mg
1 mM	2.7816 mL	13.9082 mL	27.8164 mL
5 mM	0.5563 mL	2.7816 mL	5.5633 mL
10 mM	0.2782 mL	1.3908 mL	2.7816 mL
50 mM	0.0556 mL	0.2782 mL	0.5563 mL

Please select the appropriate solvent to prepare the stock solution, according to the solubility of the product in different solvents. Please use it as soon as possible.

Note: The dilution table applies only to solid products. For liquid products, please calculate the stock solution based on the stated concentration and/or density.

Inhibitor · Natural Compounds · Compound Libraries · Recombinant Proteins

This product is for Research Use Only · Not for Human or Veterinary or Therapeutic Use

Tel:781-999-4286

E_mail:info@targetmol.com

Address:34 Washington Street,Wellesley Hills,MA 02481