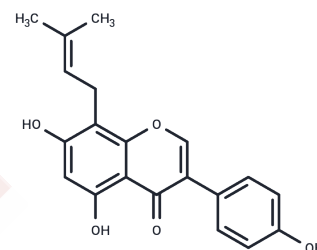


## Lupiwighteone

## Chemical Properties

CAS No. :	104691-86-3
Formula:	C <sub>20</sub> H <sub>18</sub> O <sub>5</sub>
Molecular Weight:	338.35
Storage:	Powder: -20°C for 3 years   In solvent: -80°C for 1 year Actual storage temperature shall be subject to the COA.



## Biological Description

Description	Lupiwighteone has anti-angiogenesis potential, it also has anticancer and cancer preventive effects on SH-SY5Y cells.
Targets(IC50)	Apoptosis,Bcl-2 Family,Caspase,PARP
In vitro	This study aimed to examine the antitumor activity of Lupiwighteone, explore its antitumor mechanism in a human prostate carcinoma cell line (DU-145), and evaluate its antiangiogenetic activity in the human umbilical vein endothelial cell line (HUVEC). The results showed that Lupiwighteone could inhibit the growth of DU-145 and HUVEC cells in a concentration-dependent and time-dependent manner by a 3-(4,5-dimethylthiazol-2-yl)-2,5-diphenyl tetrazolium bromide assay. Flow cytometry analysis indicated that Lupiwighteone could induce cell cycle arrest, cells apoptosis, mitochondrial membrane potential loss, and an increase in intracellular reactive oxygen species of DU-145 cells. Upregulation of Bax, cytochrome c, caspase-3, and PARP-1 protein expressions and downregulation of Bcl-2, procaspase-9, and p-Akt protein expressions were observed by western blot after the treatment of Lupiwighteone. Furthermore, the effects of Lupiwighteone on the cellular behavior of HUVECs were also investigated.

## Solubility Information

Solubility	DMSO: 60 mg/mL (177.33 mM),Sonication is recommended. (< 1 mg/ml refers to the product slightly soluble or insoluble)
In vivo Formulation	10% DMSO+90% Corn Oil: 2.5 mg/mL (7.39 mM),Sonication is recommended. <i>Please add the solvents sequentially, clarifying the solution as much as possible before adding the next one. Dissolve by heating and/or sonication if necessary. Working solution is recommended to be prepared and used immediately. The formulation provided above is for reference purposes only. In vivo formulations may vary and should be modified based on specific experimental conditions.</i>

### Preparing Stock Solutions

---

	<b>1mg</b>	<b>5mg</b>	<b>10mg</b>
1 mM	2.9555 mL	14.7776 mL	29.5552 mL
5 mM	0.5911 mL	2.9555 mL	5.911 mL
10 mM	0.2956 mL	1.4778 mL	2.9555 mL
50 mM	0.0591 mL	0.2956 mL	0.5911 mL

---

Please select the appropriate solvent to prepare the stock solution, according to the solubility of the product in different solvents. Please use it as soon as possible.

Note: The dilution table applies only to solid products. For liquid products, please calculate the stock solution based on the stated concentration and/or density.

### Reference

Isoflavone lupiwighteone induces cytotoxic, apoptotic, and antiangiogenic activities in DU-145 prostate cancer cells. *Anticancer Drugs*. 2015 Jul;26(6):599-611.

**Inhibitor · Natural Compounds · Compound Libraries · Recombinant Proteins**

This product is for Research Use Only · Not for Human or Veterinary or Therapeutic Use

Tel:781-999-4286 E\_mail:info@targetmol.com Address:34 Washington Street,Wellesley Hills,MA 02481