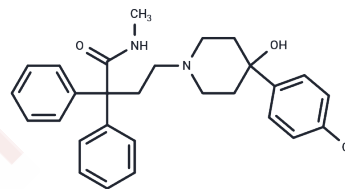


## N-Desmethyl Loperamide

## Chemical Properties

CAS No. :	66164-07-6
Formula:	C <sub>28</sub> H <sub>31</sub> ClN <sub>2</sub> O <sub>2</sub>
Molecular Weight:	463.01
Storage:	Store at low temperature Powder: -20°C for 3 years   In solvent: -80°C for 1 year <small>Actual storage temperature shall be subject to the COA.</small>



## Biological Description

Description	N-Desmethyl Loperamide is the primary metabolite of Loperamide and also a competitive substrate for P-glycoprotein. Loperamide is a selective $\mu$ -opioid agonist with antidiarrheal effects.
Targets(IC50)	Drug Metabolite,P-gp

## Solubility Information

Solubility	DMSO: 4 mg/mL (8.64 mM),Sonication is recommended. (< 1 mg/ml refers to the product slightly soluble or insoluble)
------------	---

## Preparing Stock Solutions

	1mg	5mg	10mg
1 mM	2.1598 mL	10.7989 mL	21.5978 mL
5 mM	0.432 mL	2.1598 mL	4.3196 mL
10 mM	0.216 mL	1.0799 mL	2.1598 mL
50 mM	0.0432 mL	0.216 mL	0.432 mL

Please select the appropriate solvent to prepare the stock solution, according to the solubility of the product in different solvents. Please use it as soon as possible.

Note: The dilution table applies only to solid products. For liquid products, please calculate the stock solution based on the stated concentration and/or density.

### Reference

Sklerov J, et al. Tissue distribution of loperamide and N-desmethyloperamide following a fatal overdose. *J Anal Toxicol.* 2005;29(7):750-754.

Kalgutkar AS, et al. Identification of an N-methyl-4-phenylpyridinium-like metabolite of the antidiarrheal agent loperamide in human liver microsomes: underlying reason(s) for the lack of neurotoxicity despite the bioactivation event. *Drug Metab Dispos.* 2004;32(9):943-952.

Kannan P, et al. N-desmethyl-loperamide is selective for P-glycoprotein among three ATP-binding cassette transporters at the blood-brain barrier. *Drug Metab Dispos.* 2010;38(6):917-922.

Wanek T, et al. Factors Governing P-Glycoprotein-Mediated Drug-Drug Interactions at the Blood-Brain Barrier Measured with Positron Emission Tomography. *Mol Pharm.* 2015 Sep 8;12(9):3214-25.

**Inhibitor · Natural Compounds · Compound Libraries · Recombinant Proteins**

This product is for Research Use Only · Not for Human or Veterinary or Therapeutic Use

Tel:781-999-4286 E\_mail:info@targetmol.com Address:34 Washington Street,Wellesley Hills,MA 02481