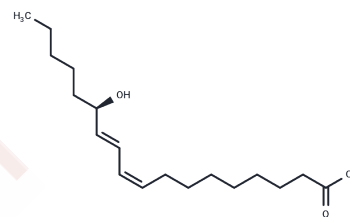


13(R)-HODE

Chemical Properties

CAS No. :	10219-69-9
Formula:	C ₁₈ H ₃₂ O ₃
Molecular Weight:	296.44
Storage:	Powder: -20°C for 3 years In solvent: -80°C for 1 year Actual storage temperature shall be subject to the COA.



Biological Description

Description	13(R)-HODE is the opposite enantiomer of 13(S)-HODE produced when linoleic acid is incubated with soybean lipoxygenase. Its presence in supernatants and membranes of cultured bovine endothelial cells has been attributed to COX metabolism. 13(R)-HODE is a weak (IC ₅₀ = 2.7 μM) inhibitor of U-46619-induced platelet aggregation.
Targets(IC ₅₀)	Others, Endogenous Metabolite

Solubility Information

Solubility	PBS (pH 7.2): >1 mg/mL (from 13(S)-HODE), Sonication is recommended. DMSO: >50 mg/mL (per Rao Maddipati), Sonication is recommended. Ethanol: >50 mg/mL (per Rao Maddipati), Sonication is recommended. DMF: >50 mg/mL (per Rao Maddipati), Sonication is recommended. (< 1 mg/ml refers to the product slightly soluble or insoluble)
------------	--

Preparing Stock Solutions

	1mg	5mg	10mg
1 mM	3.3734 mL	16.8668 mL	33.7336 mL
5 mM	0.6747 mL	3.3734 mL	6.7467 mL
10 mM	0.3373 mL	1.6867 mL	3.3734 mL
50 mM	0.0675 mL	0.3373 mL	0.6747 mL

Please select the appropriate solvent to prepare the stock solution, according to the solubility of the product in different solvents. Please use it as soon as possible.

Note: The dilution table applies only to solid products. For liquid products, please calculate the stock solution based on the stated concentration and/or density.

Inhibitor · Natural Compounds · Compound Libraries · Recombinant Proteins

This product is for Research Use Only · Not for Human or Veterinary or Therapeutic Use

Tel:781-999-4286 E_mail:info@targetmol.com Address:34 Washington Street,Wellesley Hills,MA 02481