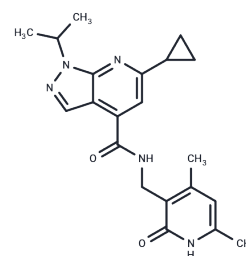


GSK-A

Chemical Properties

CAS No. : 923894-97-7
 Formula: C₂₁H₂₅N₅O₂
 Molecular Weight: 379.46
 Storage: Powder: -20°C for 3 years | In solvent: -80°C for 1 year
 Actual storage temperature shall be subject to the COA.



Biological Description

Description	GSK-A is a Histone Lysine Methyltransferase EZH2 inhibitor.
Targets(IC50)	Others,Histone Methyltransferase

Preparing Stock Solutions

	1mg	5mg	10mg
1 mM	2.6353 mL	13.1766 mL	26.3532 mL
5 mM	0.5271 mL	2.6353 mL	5.2706 mL
10 mM	0.2635 mL	1.3177 mL	2.6353 mL
50 mM	0.0527 mL	0.2635 mL	0.5271 mL

Please select the appropriate solvent to prepare the stock solution, according to the solubility of the product in different solvents. Please use it as soon as possible.

Note: The dilution table applies only to solid products. For liquid products, please calculate the stock solution based on the stated concentration and/or density.

Reference

Fraley KJ, Abberley L, Hottenstein CS, Ulicne JJ, Citerone DR, Szapacs ME. The Gyrolab™ immunoassay system: a platform for automated bioanalysis and rapid sample turnaround. *Bioanalysis*. 2013 Jul;5(14):1765-74. doi: 10.4155/bio.13.145. PubMed PMID: 23862708.

Cheng Z, Zhang J, Liu H, Li Y, Zhao Y, Yang E. Central nervous system penetration for small molecule therapeutic agents does not increase in multiple sclerosis- and Alzheimer's disease-related animal models despite reported blood-brain barrier disruption. *Drug Metab Dispos*. 2010 Aug;38(8):1355-61. doi: 10.1124/dmd.110.033324. Epub 2010 Apr 28. PubMed PMID: 20427691.

Fries HE, Aiello M, Evans CA. Use of a variably sensitive selected reaction monitoring method to extend the linear dynamic range for quantitative high-performance liquid chromatography/tandem mass spectrometry. *Rapid Commun Mass Spectrom*. 2007;21(3):369-74. PubMed PMID: 17206741.

Inhibitor · Natural Compounds · Compound Libraries · Recombinant Proteins

This product is for Research Use Only · Not for Human or Veterinary or Therapeutic Use

Tel:781-999-4286 E_mail:info@targetmol.com Address:34 Washington Street,Wellesley Hills,MA 02481