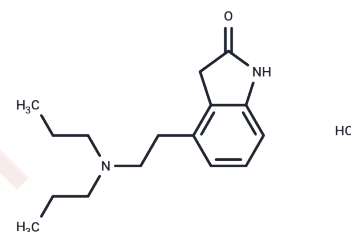


## Ropinirole hydrochloride

### Chemical Properties

CAS No. : 91374-20-8  
 Formula: C<sub>16</sub>H<sub>24</sub>N<sub>2</sub>O·HCl  
 Molecular Weight: 296.84  
 Storage: Powder: -20°C for 3 years | In solvent: -80°C for 1 year  
*Actual storage temperature shall be subject to the COA.*



### Biological Description

Description	Ropinirole hydrochloride (SKF-101468A) is a selective dopamine D2 receptors agonist (K <sub>i</sub> : 29 nM). Ropinirole hydrochloride (SKF-101468A) is the hydrochloride salt form of ropinirole, a non-ergot dopamine agonist with antiparkinsonian property.
Targets(IC50)	Dopamine Receptor
In vitro	Ropinirole scavenges free radicals and suppresses lipid peroxidation in the Fe <sup>2+</sup> -Water <sub>2</sub> reaction system. [2]
In vivo	Ropinirole (50 mg/kg, i.p.) causes biphasic spontaneous locomotor activity in mice. Ropinirole (0.05-1.0 mg/kg SC) dose-dependently inhibits the dyskinesias induced by 2-di-n-propylamino-5,6-di-hydroxytetralin in mice. Ropinirole, at doses of 1 and 10 μg, injected unilaterally directly into the striatum of the rat causes marked, contralateral (away from the side of injection) asymmetry and circling in mice. Ropinirole (0.05-1.0 mg/kg SC or 0.1 mg/kg PO) reverses all motor and behavioural deficits induced by MPTP in marmosets. [1] Ropinirole (2 mg/kg, i.p.) for 7 days increases GSH, catalase and SOD activities in the striatum and protected striatal dopaminergic neurons against 6-hydroxydopamine (6-OHDA) in mice. [2] Ropinirole (0.2 mg/kg, i.p.) improves the use of previously akinetic forelimb and produced robust circling behavior in lesioned rats with striatal over-expression of both D2R and D3R compared to lesioned animals that received blank vector. The subtherapeutic dose of ropinirole generates only modest motor effects in lesioned rats with sole over-expression of D2R or D3R. [3] Ropinirole (1-8 mg t.i.d.) is rapidly and completely absorbed with oral bioavailability of 55%, clearance of 780 mL/min, elimination half-life of 6 hours in healthy volunteer. Since the major route of elimination for Ropinirole is by the CYP enzyme system, mainly by CYP1A2 and also by CYP3A4, inhibition of the former and possibly the latter may reduce the agent's clearance and lead to drug accumulation. [4] Ropinirole (0.25 mg-4.0 mg per day) treatment significantly improves patients' ability to initiate sleep, the amount of stage 2 sleep and sleep adequacy compared with placebo. Periodic limb movements with arousal per hour decreases from 7.0 to 2.5 with ropinirole but increases from 4.2 to 6.0 with placebo. Periodic limb movements while awake per hour decreases from 56.5 to 23.6 with ropinirole but increases from 46.6 to 56.1 with placebo. [5]
Kinase Assay	PARP1 enzyme activity is measured by using a commercial assay kit with the exception that cell lysates containing wild-type PARP1 or PARP Y907 mutant are used in place of the PARP1 protein included with the kit. Total lysate (500 ng) is added to each reaction.

## A DRUG SCREENING EXPERT

Kinase Assay	The dose course of PARP inhibitor Veliparib (ABT-888) is from 0.01 to 1,000 $\mu$ M. PARP enzyme activity of wild-type and mutants is determined after incubation with the substrate is measured using a plate reader[2].
--------------	---

### Solubility Information

Solubility	DMSO: 5.63 mg/mL (18.97 mM),Sonication is recommended. H2O: 29.7 mg/mL (100.05 mM),Sonication is recommended. (< 1 mg/ml refers to the product slightly soluble or insoluble)
In vivo Formulation	10% DMSO+40% PEG300+5% Tween 80+45% Saline: 1 mg/mL (3.37 mM),Sonication is recommended. <i>Please add the solvents sequentially, clarifying the solution as much as possible before adding the next one. Dissolve by heating and/or sonication if necessary. Working solution is recommended to be prepared and used immediately. The formulation provided above is for reference purposes only. In vivo formulations may vary and should be modified based on specific experimental conditions.</i>

### Preparing Stock Solutions

	1mg	5mg	10mg
1 mM	3.3688 mL	16.8441 mL	33.6882 mL
5 mM	0.6738 mL	3.3688 mL	6.7376 mL
10 mM	0.3369 mL	1.6844 mL	3.3688 mL
50 mM	0.0674 mL	0.3369 mL	0.6738 mL

Please select the appropriate solvent to prepare the stock solution, according to the solubility of the product in different solvents. Please use it as soon as possible.

Note: The dilution table applies only to solid products. For liquid products, please calculate the stock solution based on the stated concentration and/or density.

### Reference

- Eden RJ, et al. Pharmacol Biochem Behav, 1991, 38(1), 147-154.
- Iida M, et al. Brain Res, 1999, 838(1-2), 51-59.
- Matsukawa N, et al. Brain Res, 2007, 1160, 113-123.
- Lam YW, et al. Pharmacotherapy, 2000, 20(1 Pt 2), 17S-25S.
- Allen R, et al. Sleep, 2004, 27(5), 907-914.

**Inhibitor · Natural Compounds · Compound Libraries · Recombinant Proteins**

This product is for Research Use Only · Not for Human or Veterinary or Therapeutic Use

Tel:781-999-4286 E\_mail:info@targetmol.com Address:34 Washington Street,Wellesley Hills,MA 02481