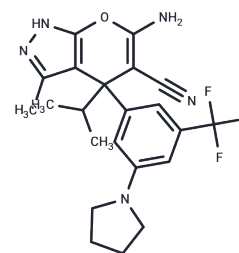


SHMT-IN-2

Chemical Properties

CAS No. :	2102681-49-0
Formula:	C22H24F3N5O
Molecular Weight:	431.45
Storage:	Keep away from direct sunlight Powder: -20°C for 3 years In solvent: -80°C for 1 year <small>Actual storage temperature shall be subject to the COA.</small>



Biological Description

Description	SHMT-IN-2 (compound 2) is a specific human SHMT1/2 small molecule inhibitor that acts on SHMT1 (IC50: 13 nM) and SHMT2 (IC50: 66 nM). SHMT-IN-2 inhibits the growth of many human cancer cells and is sensitive to B-cell lymphoma.
Targets(IC50)	Others

Solubility Information

Solubility	DMSO: 90 mg/mL (208.6 mM), Sonication is recommended. (< 1 mg/ml refers to the product slightly soluble or insoluble)
In vivo Formulation	10% DMSO+40% PEG300+5% Tween 80+45% Saline: 3.3 mg/mL (7.65 mM), Sonication is recommended. <i>Please add the solvents sequentially, clarifying the solution as much as possible before adding the next one. Dissolve by heating and/or sonication if necessary. Working solution is recommended to be prepared and used immediately. The formulation provided above is for reference purposes only. In vivo formulations may vary and should be modified based on specific experimental conditions.</i>

Preparing Stock Solutions

	1mg	5mg	10mg
1 mM	2.3178 mL	11.5888 mL	23.1777 mL
5 mM	0.4636 mL	2.3178 mL	4.6355 mL
10 mM	0.2318 mL	1.1589 mL	2.3178 mL
50 mM	0.0464 mL	0.2318 mL	0.4636 mL

Please select the appropriate solvent to prepare the stock solution, according to the solubility of the product in different solvents. Please use it as soon as possible.

Note: The dilution table applies only to solid products. For liquid products, please calculate the stock solution based on the stated concentration and/or density.

Reference

regory S Ducker, et al. Human SHMT inhibitors reveal defective glycine import as a targetable metabolic vulnerability of diffuse large B-cell lymphoma. Proc Natl Acad Sci U S A. 2017 Oct 24;114(43):11404-11409.

Inhibitor · Natural Compounds · Compound Libraries · Recombinant Proteins

This product is for Research Use Only· Not for Human or Veterinary or Therapeutic Use

Tel:781-999-4286 E_mail:info@targetmol.com Address:34 Washington Street,Wellesley Hills,MA 02481