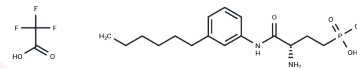


W140 (trifluoroacetate salt)

Chemical Properties

| | |
|-------------------|---|
| CAS No. : | 909725-64-0 |
| Formula: | C ₁₈ H ₂₈ F ₃ N ₂ O ₆ P |
| Molecular Weight: | 456.399 |
| Storage: | Powder: -20°C for 3 years In solvent: -80°C for 1 year Actual storage temperature shall be subject to the COA. |



Biological Description

| | |
|---------------|--|
| Description | Sphingosine-1-phosphate (S1P) is a bioactive lipid that exhibits a broad spectrum of biological activities including cell proliferation, survival, migration, cytoskeletal organization, and morphogenesis. It exerts its activity by binding to five distinct G protein-coupled receptors, S1P1/EDG-1, S1P2/EDG-5, S1P3/EDG-3, S1P4/EDG-6, and S1P5/EDG-8. W140 is an inactive enantiomer of W146, a selective S1P1 antagonist ($K_i = 77$ nM), that binds to the S1P1 receptor with a K_i of 4.6 μ M (2a = W146; 2b = W140 in supplemental material). It exhibits no biological activity in vivo and can therefore serve as an effective control compound for experiments involving W146. |
| Targets(IC50) | Others |

Solubility Information

| | |
|------------|---|
| Solubility | Ethanol: 0.15 mg/mL (0.33 mM), Sonication is recommended. (< 1 mg/ml refers to the product slightly soluble or insoluble) |
|------------|---|

Preparing Stock Solutions

| | 1mg | 5mg | 10mg |
|-------|-----------|------------|------------|
| 1 mM | 2.1911 mL | 10.9553 mL | 21.9106 mL |
| 5 mM | 0.4382 mL | 2.1911 mL | 4.3821 mL |
| 10 mM | 0.2191 mL | 1.0955 mL | 2.1911 mL |
| 50 mM | 0.0438 mL | 0.2191 mL | 0.4382 mL |

Please select the appropriate solvent to prepare the stock solution, according to the solubility of the product in different solvents. Please use it as soon as possible.

Note: The dilution table applies only to solid products. For liquid products, please calculate the stock solution based on the stated concentration and/or density.

Inhibitor · Natural Compounds · Compound Libraries · Recombinant Proteins

This product is for Research Use Only · Not for Human or Veterinary or Therapeutic Use

Tel:781-999-4286 E_mail:info@targetmol.com Address:34 Washington Street,Wellesley Hills,MA 02481