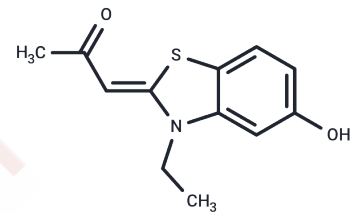


INDY

Chemical Properties

CAS No. :	1169755-45-6
Formula:	C ₁₂ H ₁₃ NO ₂ S
Molecular Weight:	235.3
Storage:	Powder: -20°C for 3 years In solvent: -80°C for 1 year Actual storage temperature shall be subject to the COA.



Biological Description

Description	INDY is an ATP-competitive inhibitor of Dyrk1A and Dyrk1B with IC ₅₀ s of 0.24 μM and 0.23 μM and a K _i of 0.18 μM for Dyrk1A ATP pocket, respectively.
Targets(IC ₅₀)	DYRK
In vitro	INDY effectively rescues the repressed NFAT signaling induced by Dyrk1A overexpression. In COS7 cells transfected with either EGFP-Dyrk1A or EGFP-tau, INDY mildly inhibits tau-phosphorylation at the dose of 3 μM, and inhibits nearly completely at the dose of 30 μM[1].
In vivo	In the Xenopus embryo, ProINDY (2.5 μM) recovers normal development apparently[1].

Solubility Information

Solubility	DMSO: 5 mg/mL (21.25 mM), Sonication and heating to 60°C are recommended. (< 1 mg/ml refers to the product slightly soluble or insoluble)
------------	---

Preparing Stock Solutions

	1mg	5mg	10mg
1 mM	4.2499 mL	21.2495 mL	42.4989 mL
5 mM	0.850 mL	4.2499 mL	8.4998 mL
10 mM	0.425 mL	2.1249 mL	4.2499 mL
50 mM	0.085 mL	0.425 mL	0.850 mL

Please select the appropriate solvent to prepare the stock solution, according to the solubility of the product in different solvents. Please use it as soon as possible.

Note: The dilution table applies only to solid products. For liquid products, please calculate the stock solution based on the stated concentration and/or density.

Reference

Ogawa Y, et al. Development of a novel selective inhibitor of the Down syndrome-related kinase Dyrk1A. Nat Commun. 2010 Oct 5;1:86.

Pozo N, et al. Inhibition of DYRK1A destabilizes EGFR and reduces EGFR-dependent glioblastoma growth. J Clin Invest. 2013 Jun;123(6):2475-87.

Inhibitor · Natural Compounds · Compound Libraries · Recombinant Proteins

This product is for Research Use Only · Not for Human or Veterinary or Therapeutic Use

Tel:781-999-4286 E_mail:info@targetmol.com Address:34 Washington Street,Wellesley Hills,MA 02481