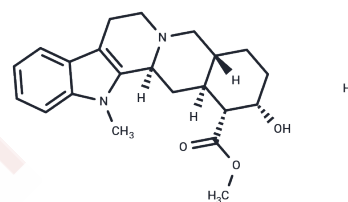


## 1-Methylyohimbine

## Chemical Properties

CAS No. :	5057-80-7
Formula:	C <sub>22</sub> H <sub>29</sub> N <sub>2</sub> O <sub>3</sub>
Molecular Weight:	496.38
Storage:	Powder: -20°C for 3 years   In solvent: -80°C for 1 year Actual storage temperature shall be subject to the COA.



## Biological Description

Description	1-Methylyohimbine is a biochemical.
Targets(IC50)	Others

## Preparing Stock Solutions

	1mg	5mg	10mg
1 mM	2.0146 mL	10.0729 mL	20.1459 mL
5 mM	0.4029 mL	2.0146 mL	4.0292 mL
10 mM	0.2015 mL	1.0073 mL	2.0146 mL
50 mM	0.0403 mL	0.2015 mL	0.4029 mL

Please select the appropriate solvent to prepare the stock solution, according to the solubility of the product in different solvents. Please use it as soon as possible.

Note: The dilution table applies only to solid products. For liquid products, please calculate the stock solution based on the stated concentration and/or density.

## Reference

Kabayashi J, Shinoki N, Nakamura T, Ariyoshi H, Kawasaki T, Sakon M, Monden M. Prevalence of impaired responsiveness to epinephrine in platelets among Japanese. *Thromb Res.* 1996 Jan 1;81(1):85-90. PubMed PMID: 8747523.

Borst SE, Hui KK, Conolly ME. The effects of some beta lactam antibiotics on (3H)-methyl-yohimbine binding to intact human platelets. *Res Commun Chem Pathol Pharmacol.* 1985 May;48(2):243-54. PubMed PMID: 2862670.

**Inhibitor · Natural Compounds · Compound Libraries · Recombinant Proteins**

This product is for Research Use Only · Not for Human or Veterinary or Therapeutic Use

Tel:781-999-4286 E\_mail:info@targetmol.com Address:34 Washington Street,Wellesley Hills,MA 02481