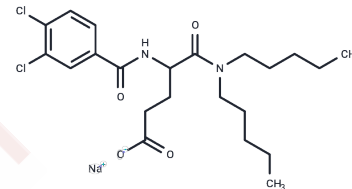


## Lorglumide sodium salt

## Chemical Properties

CAS No. :	1021868-76-7
Formula:	C <sub>22</sub> H <sub>31</sub> Cl <sub>2</sub> N <sub>2</sub> NaO <sub>4</sub>
Molecular Weight:	481.39
Storage:	Store at low temperature Powder: -20°C for 3 years   In solvent: -80°C for 1 year <i>Actual storage temperature shall be subject to the COA.</i>



## Biological Description

Description	Lorglumide sodium salt (CR-1409 sodium salt) is an antagonist of cholecystokinin receptors (CCK).
Targets(IC50)	Cholecystokinin Receptor

## Solubility Information

Solubility	DMSO: 90 mg/mL (186.96 mM),Sonication is recommended. H <sub>2</sub> O: 100 mg/mL (207.73 mM),Sonication is recommended. ( $< 1$ mg/ml refers to the product slightly soluble or insoluble)
In vivo Formulation	10% DMSO+90% Corn Oil: 3.3 mg/mL (6.86 mM),Sonication is recommended. <i>Please add the solvents sequentially, clarifying the solution as much as possible before adding the next one. Dissolve by heating and/or sonication if necessary. Working solution is recommended to be prepared and used immediately. The formulation provided above is for reference purposes only. In vivo formulations may vary and should be modified based on specific experimental conditions.</i>

## Preparing Stock Solutions

	1mg	5mg	10mg
1 mM	2.0773 mL	10.3866 mL	20.7732 mL
5 mM	0.4155 mL	2.0773 mL	4.1546 mL
10 mM	0.2077 mL	1.0387 mL	2.0773 mL
50 mM	0.0415 mL	0.2077 mL	0.4155 mL

Please select the appropriate solvent to prepare the stock solution, according to the solubility of the product in different solvents. Please use it as soon as possible.

Note: The dilution table applies only to solid products. For liquid products, please calculate the stock solution based on the stated concentration and/or density.

Reference

Scarpignato C, et al. Effect of a new potent CCK antagonist, lorglumide, on caerulein- and bombesin-induced pancreatic secretion and growth in the rat. Br J Pharmacol. 1989 Mar;96(3):661-9.

**Inhibitor · Natural Compounds · Compound Libraries · Recombinant Proteins**

This product is for Research Use Only · Not for Human or Veterinary or Therapeutic Use

Tel:781-999-4286 E\_mail:info@targetmol.com Address:34 Washington Street,Wellesley Hills,MA 02481