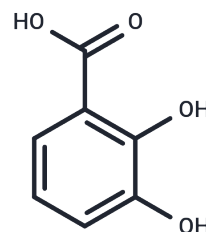


Pyrocatechuic acid

Chemical Properties

CAS No. :	303-38-8
Formula:	C7H6O4
Molecular Weight:	154.12
Storage:	Powder: -20°C for 3 years In solvent: -80°C for 1 year Actual storage temperature shall be subject to the COA.



Biological Description

Description	Pyrocatechuic acid (Catecholcarboxylic acid), a normal human benzoic acid metabolite found in plasma, has increased levels after aspirin ingestion.
Targets(IC50)	Endogenous Metabolite

Solubility Information

Solubility	DMSO: 15 mg/mL (97.33 mM),Sonication is recommended. (< 1 mg/ml refers to the product slightly soluble or insoluble)
In vivo Formulation	10% DMSO+40% PEG300+5% Tween 80+45% Saline: 2 mg/mL (12.98 mM),Sonication is recommended. <i>Please add the solvents sequentially, clarifying the solution as much as possible before adding the next one. Dissolve by heating and/or sonication if necessary. Working solution is recommended to be prepared and used immediately. The formulation provided above is for reference purposes only. In vivo formulations may vary and should be modified based on specific experimental conditions.</i>

Preparing Stock Solutions

	1mg	5mg	10mg
1 mM	6.4885 mL	32.4423 mL	64.8845 mL
5 mM	1.2977 mL	6.4885 mL	12.9769 mL
10 mM	0.6488 mL	3.2442 mL	6.4885 mL
50 mM	0.1298 mL	0.6488 mL	1.2977 mL

Please select the appropriate solvent to prepare the stock solution, according to the solubility of the product in different solvents. Please use it as soon as possible.

Note: The dilution table applies only to solid products. For liquid products, please calculate the stock solution based on the stated concentration and/or density.

Reference

AJ, Trygg J, et al. Extraction and GC/MS analysis of the human blood plasma metabolome. Anal Chem. 2005 Dec 15;77(24):8086-94.

Inhibitor · Natural Compounds · Compound Libraries · Recombinant Proteins

This product is for Research Use Only · Not for Human or Veterinary or Therapeutic Use

Tel:781-999-4286 E_mail:info@targetmol.com Address:34 Washington Street,Wellesley Hills,MA 02481