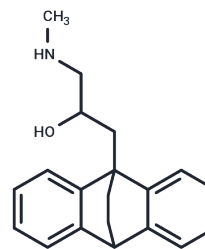


## Oxaprotiline

## Chemical Properties

CAS No. :	56433-44-4
Formula:	C <sub>20</sub> H <sub>23</sub> NO
Molecular Weight:	293.4
Storage:	Powder: -20°C for 3 years   In solvent: -80°C for 1 year Actual storage temperature shall be subject to the COA.



## Biological Description

Description	Oxaprotiline is an antidepressant compound. It is a norepinephrine reuptake inhibitor that blocks histamine H1 receptors. Oxaprotiline has been studied for its efficacy in treating hospitalized patients with depression, but it is not on the market.
Targets(IC50)	Others, Adrenergic Receptor

## Preparing Stock Solutions

	1mg	5mg	10mg
1 mM	3.4083 mL	17.0416 mL	34.0832 mL
5 mM	0.6817 mL	3.4083 mL	6.8166 mL
10 mM	0.3408 mL	1.7042 mL	3.4083 mL
50 mM	0.0682 mL	0.3408 mL	0.6817 mL

Please select the appropriate solvent to prepare the stock solution, according to the solubility of the product in different solvents. Please use it as soon as possible.

Note: The dilution table applies only to solid products. For liquid products, please calculate the stock solution based on the stated concentration and/or density.

### Reference

- Birtheimer A, Ehret A, Riegert C, Rothmaier AK, Leemhuis J, Jackisch R. Modulation of electrically evoked serotonin release in cultured rat raphe neurons. *J Neurochem*. 2007 Mar;100(6):1613-25. PubMed PMID: 17348865.
- Ding YS, Lin KS, Logan J. PET imaging of norepinephrine transporters. *Curr Pharm Des*. 2006;12(30):3831-45. Review. PubMed PMID: 17073682.
- Löffler M, Bubl B, Hueth F, Hubbe U, McIntosh JM, Jackisch R, Feuerstein TJ. Dopamine release in human neocortical slices: characterization of inhibitory autoreceptors and of nicotinic acetylcholine receptor-evoked release. *Brain Res Bull*. 2006 Jan 30;68(5):361-73. Epub 2005 Oct 17. PubMed PMID: 16377444.
- Ding YS, Lin KS, Logan J, Benveniste H, Carter P. Comparative evaluation of positron emission tomography radiotracers for imaging the norepinephrine transporter: (S,S) and (R,R) enantiomers of reboxetine analogs ([<sup>11</sup>C] methylreboxetine, 3-Cl-[<sup>11</sup>C]methylreboxetine and [<sup>18</sup>F]fluororeboxetine), (R)-[<sup>11</sup>C]nisoxetine, [<sup>11</sup>C]oxaprotiline and [<sup>11</sup>C]lortalamine. *J Neurochem*. 2005 Jul;94(2):337-51. PubMed PMID: 15998285.

**Inhibitor · Natural Compounds · Compound Libraries · Recombinant Proteins**

This product is for Research Use Only · Not for Human or Veterinary or Therapeutic Use

Tel:781-999-4286 E\_mail:info@targetmol.com Address:34 Washington Street,Wellesley Hills,MA 02481