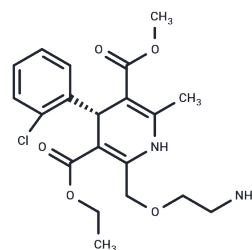


## (R)-Amlodipine

## Chemical Properties

CAS No. :	103129-81-3
Formula:	C <sub>20</sub> H <sub>25</sub> ClN <sub>2</sub> O <sub>5</sub>
Molecular Weight:	408.88
Storage:	Store at low temperature, Store under nitrogen Powder: -20°C for 3 years   In solvent: -80°C for 1 year <i>Actual storage temperature shall be subject to the COA.</i>



## Biological Description

Description	(R)-Amlodipine is the R-enantiomer of Amlodipine and functions as an orally active dihydropyridine calcium channel blocker with antianginal properties, (R)-Amlodipine exerts its effect by blocking voltage-dependent L-type calcium channels and thus reducing calcium influx into cells. (R)-Amlodipine can be employed in research concerning high blood pressure and cancer, as (R)-Amlodipine calcium channel regulation ability provide a mechanistic basis for investigating cardiovascular disorders and tumor-related pathophysiology.
Targets(IC50)	Others, Calcium Channel

## Solubility Information

Solubility	DMSO: 80 mg/mL (195.66 mM), Sonication is recommended. ( $< 1$ mg/ml refers to the product slightly soluble or insoluble)
In vivo Formulation	10% DMSO+40% PEG300+5% Tween-80+45% Saline: 3.3 mg/mL (8.07 mM), Sonication is recommended. <i>Please add the solvents sequentially, clarifying the solution as much as possible before adding the next one. Dissolve by heating and/or sonication if necessary. Working solution is recommended to be prepared and used immediately. The formulation provided above is for reference purposes only. In vivo formulations may vary and should be modified based on specific experimental conditions.</i>

### Preparing Stock Solutions

---

	1mg	5mg	10mg
1 mM	2.4457 mL	12.2285 mL	24.4571 mL
5 mM	0.4891 mL	2.4457 mL	4.8914 mL
10 mM	0.2446 mL	1.2229 mL	2.4457 mL
50 mM	0.0489 mL	0.2446 mL	0.4891 mL

---

Please select the appropriate solvent to prepare the stock solution, according to the solubility of the product in different solvents. Please use it as soon as possible.

Note: The dilution table applies only to solid products. For liquid products, please calculate the stock solution based on the stated concentration and/or density.

### Reference

Gottwald-Hostalek U, et al. Management of Hypertension With a Fixed-Dose (Single-Pill) Combination of Bisoprolol and Amlodipine. Clin Pharmacol Drug Dev. 2017 Jan;6(1):9-18.

van Zwieten PA. Amlodipine: an overview of its pharmacodynamic and pharmacokinetic properties. Clin Cardiol. 1994 Sep;17(9 Suppl 3):III3-6.

**Inhibitor · Natural Compounds · Compound Libraries · Recombinant Proteins**

This product is for Research Use Only · Not for Human or Veterinary or Therapeutic Use

Tel:781-999-4286 E\_mail:info@targetmol.com Address:34 Washington Street,Wellesley Hills,MA 02481