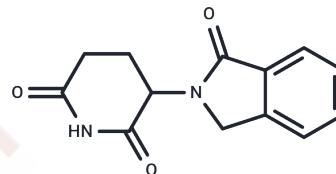


EM-12

Chemical Properties

CAS No. : 26581-81-7
 Formula: C₁₃H₁₂N₂O₃
 Molecular Weight: 244.25
 Storage: Powder: -20°C for 3 years | In solvent: -80°C for 1 year
 Actual storage temperature shall be subject to the COA.



Biological Description

Description	2-(2,6-Dioxopiperidin-3-yl)phthalimidine (EM-12 (2-(2,6-Dioxopiperidin-3-yl)phthalimidine)) is a teratogenic Thalidomide analogue that is more active and significantly more stable against hydrolysis than Thalidomide, enhancing 1,2-dimethylhydrazine-induced rat colon adenocarcinomas [1] [2].
Targets(IC50)	Others,TNF

Solubility Information

Solubility	DMSO: 11 mg/mL (45.04 mM),Sonication is recommended. (< 1 mg/ml refers to the product slightly soluble or insoluble)
------------	-------------------------------------------------------------------------------------------------------------------------

Preparing Stock Solutions

	1mg	5mg	10mg
1 mM	4.0942 mL	20.4708 mL	40.9417 mL
5 mM	0.8188 mL	4.0942 mL	8.1883 mL
10 mM	0.4094 mL	2.0471 mL	4.0942 mL
50 mM	0.0819 mL	0.4094 mL	0.8188 mL

Please select the appropriate solvent to prepare the stock solution, according to the solubility of the product in different solvents. Please use it as soon as possible.

Note: The dilution table applies only to solid products. For liquid products, please calculate the stock solution based on the stated concentration and/or density.

Reference

Merker HJ, et al. Embryotoxic effects of thalidomide-derivatives in the non-human primate *Callithrix jacchus*. I. Effects of 3-(1,3-dihydro-1-oxo-2H-isoindol-2-yl)-2,6-dioxopiperidine (EM12) on skeletal development. *Arch Toxicol*. 1988;61(3):165-179.

Gershbein LL. The thalidomide analog, EM 12, enhances 1,2-dimethylhydrazine-induction of rat colon adenocarcinomas. *Cancer Lett*. 1991;60(2):129-133.

Inhibitor · Natural Compounds · Compound Libraries · Recombinant Proteins

This product is for Research Use Only · Not for Human or Veterinary or Therapeutic Use

Tel:781-999-4286 E_mail:info@targetmol.com Address:34 Washington Street,Wellesley Hills,MA 02481