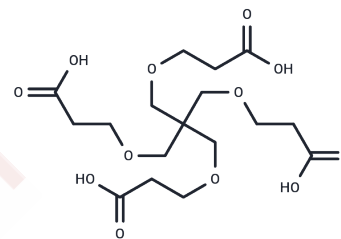


## 1,3-bis(carboxyethoxy)-2,2-bis(carboxyethoxy)propane

## Chemical Properties

CAS No. :	35638-19-8
Formula:	C17H28O12
Molecular Weight:	424.4
Storage:	Keep away from direct sunlight Powder: -20°C for 3 years   In solvent: -80°C for 1 year <small>Actual storage temperature shall be subject to the COA.</small>



## Biological Description

Description	1,3-bis(carboxyethoxy)-2,2-bis(carboxyethoxy)propane is a polyethylene glycol (PEG)-based linker compound suitable for the synthesis of proteolysis-targeting chimeras (PROTACs) [1].
Targets(IC50)	Others,PROTAC Linker
In vitro	PROTACs, comprising two ligands connected by a linker, utilize the intracellular ubiquitin-proteasome system to selectively degrade target proteins; one ligand binds an E3 ubiquitin ligase, and the other binds the target protein [1].

## Preparing Stock Solutions

	1mg	5mg	10mg
1 mM	2.3563 mL	11.7813 mL	23.5627 mL
5 mM	0.4713 mL	2.3563 mL	4.7125 mL
10 mM	0.2356 mL	1.1781 mL	2.3563 mL
50 mM	0.0471 mL	0.2356 mL	0.4713 mL

Please select the appropriate solvent to prepare the stock solution, according to the solubility of the product in different solvents. Please use it as soon as possible.

Note: The dilution table applies only to solid products. For liquid products, please calculate the stock solution based on the stated concentration and/or density.

## Reference

An S, et al. Small-molecule PROTACs: An emerging and promising approach for the development of targeted therapy drugs. EBioMedicine. 2018 Oct;36:553-562

**Inhibitor · Natural Compounds · Compound Libraries · Recombinant Proteins**

This product is for Research Use Only · Not for Human or Veterinary or Therapeutic Use

Tel:781-999-4286 E\_mail:info@targetmol.com Address:34 Washington Street,Wellesley Hills,MA 02481