

## Glyhexamide

## Chemical Properties

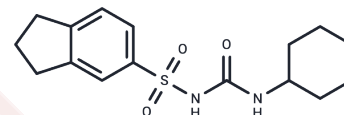
CAS No. : 451-71-8

Formula: C<sub>16</sub>H<sub>22</sub>N<sub>2</sub>O<sub>3</sub>S

Molecular Weight: 322.42

Storage: Powder: -20°C for 3 years | In solvent: -80°C for 1 year

Actual storage temperature shall be subject to the COA.



## Biological Description

Description	Glyhexamide is an effective hypoglycemic compound.
Targets(IC50)	Others
In vivo	in adult diabetics, Glyhexamide, a new cyclic sulfonylurea, is an effective hypoglycemic agent.

## Preparing Stock Solutions

	1mg	5mg	10mg
1 mM	3.1015 mL	15.5077 mL	31.0154 mL
5 mM	0.6203 mL	3.1015 mL	6.2031 mL
10 mM	0.3102 mL	1.5508 mL	3.1015 mL
50 mM	0.062 mL	0.3102 mL	0.6203 mL

Please select the appropriate solvent to prepare the stock solution, according to the solubility of the product in different solvents. Please use it as soon as possible.

Note: The dilution table applies only to solid products. For liquid products, please calculate the stock solution based on the stated concentration and/or density.

## Reference

E. M. Gold, et al. Insulin Production in Overt (Maturity-Onset) Diabetes: Absence of Hyperinsulinemia Despite Hyperglycemia Induced by Contraceptive Steroids. Metabolic Effects of Gonadal Hormones and Contraceptive Steroids pp 144-156.

**Inhibitor · Natural Compounds · Compound Libraries · Recombinant Proteins**

This product is for Research Use Only · Not for Human or Veterinary or Therapeutic Use

Tel: 781-999-4286

E\_mail: info@targetmol.com

Address: 34 Washington Street, Wellesley Hills, MA 02481