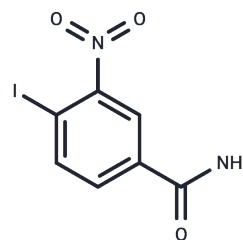


Iniparib

Chemical Properties

CAS No. :	160003-66-7
Formula:	C7H5IN2O3
Molecular Weight:	292.03
Storage:	Powder: -20°C for 3 years In solvent: -80°C for 1 year Actual storage temperature shall be subject to the COA.



Biological Description

Description	Iniparib (BSI-201) (BSI-201) , a PARP1 inhibitor, exhibits potency in triple-negative breast Y (TNBC).
Targets(IC50)	Influenza Virus,PARP
In vivo	In 855-2 cells, the combination of BSI-201 (120 μM) and buthionine sulfoximine induced cell death up to 95%, which was similar to the effect on other human tumor cells. In E- <i>ras</i> 20 cells, BSI-201 inhibited cell growth, and its effect was enhanced 20-fold when combined with buthionine sulfoximine. BSI-201 (100 μM) inhibited the repair of ionizing radiation-induced single-strand breaks (SSBs) in human lymphocyte cell lines.
Cell Research	Cells are exposed to various concentrations of BSI-201 for 5, and 9 days in the presence or absence of buthionine sulfoxamide (BSO). After treatment, cell proliferation is measured by CellTiter-Glo assay.(Only for Reference)

Solubility Information

Solubility	Ethanol: 14.6 mg/mL (49.99 mM),Sonication is recommended. DMSO: 85 mg/mL (291.07 mM),Sonication is recommended. (< 1 mg/ml refers to the product slightly soluble or insoluble)
In vivo Formulation	10% DMSO+40% PEG300+5% Tween 80+45% Saline: 3.3 mg/mL (11.3 mM),Sonication is recommended. <i>Please add the solvents sequentially, clarifying the solution as much as possible before adding the next one. Dissolve by heating and/or sonication if necessary. Working solution is recommended to be prepared and used immediately. The formulation provided above is for reference purposes only. In vivo formulations may vary and should be modified based on specific experimental conditions.</i>

Preparing Stock Solutions

	1mg	5mg	10mg
1 mM	3.4243 mL	17.1215 mL	34.2431 mL
5 mM	0.6849 mL	3.4243 mL	6.8486 mL
10 mM	0.3424 mL	1.7122 mL	3.4243 mL
50 mM	0.0685 mL	0.3424 mL	0.6849 mL

Please select the appropriate solvent to prepare the stock solution, according to the solubility of the product in different solvents. Please use it as soon as possible.

Note: The dilution table applies only to solid products. For liquid products, please calculate the stock solution based on the stated concentration and/or density.

Reference

Mendeleyev J, et al. *Biochem Pharmacol*, 1995, 50(5), 705-714.

Bauer PI, et al. *Biochem Pharmacol*, 2002, 63(3), 455-462.

Liu X, et al. *Clin Cancer Res*, 2012, 18(2), 510-523.

Ma W, et al. *Proc Natl Acad Sci U S A*, 2012, 109(17), 6590-6595.

Patel AG, et al. *Clin Cancer Res*, 2012, 18(6), 1655-1662.

Yin S, et al. Myc mediates cancer stem-like cells and EMT changes in triple negative breast cancers cells. *PLoS One*. 2017 Aug 17;12(8):e0183578.

Inhibitor · Natural Compounds · Compound Libraries · Recombinant Proteins

This product is for Research Use Only · Not for Human or Veterinary or Therapeutic Use

Tel:781-999-4286 E_mail:info@targetmol.com Address:34 Washington Street,Wellesley Hills,MA 02481