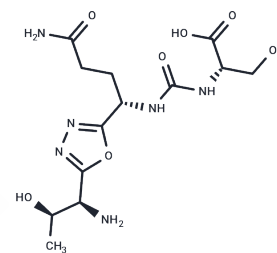


PD-1-IN-17

Chemical Properties

CAS No. :	1673560-66-1
Formula:	C13H22N6O7
Molecular Weight:	374.35
Storage:	Keep away from moisture Powder: -20°C for 3 years In solvent: -80°C for 1 year <i>Actual storage temperature shall be subject to the COA.</i>



Biological Description

Description	PD-1-IN-17 is an inhibitor of programmed cell death-1 (PD-1). PD-1-IN-17 inhibits 92% splenocyte proliferation at 100 nM.
Targets(IC50)	PD-1/PD-L1

Solubility Information

Solubility	DMSO: 112.5 mg/mL (300.52 mM),Sonication is recommended. H2O: 90 mg/mL (240.42 mM),Sonication is recommended. (< 1 mg/ml refers to the product slightly soluble or insoluble)
In vivo Formulation	10% DMSO+40% PEG300+5% Tween-80+45% Saline: 3.3 mg/mL (8.82 mM),Sonication is recommended. <i>Please add the solvents sequentially, clarifying the solution as much as possible before adding the next one. Dissolve by heating and/or sonication if necessary. Working solution is recommended to be prepared and used immediately. The formulation provided above is for reference purposes only. In vivo formulations may vary and should be modified based on specific experimental conditions.</i>

Preparing Stock Solutions

	1mg	5mg	10mg
1 mM	2.6713 mL	13.3565 mL	26.713 mL
5 mM	0.5343 mL	2.6713 mL	5.3426 mL
10 mM	0.2671 mL	1.3356 mL	2.6713 mL
50 mM	0.0534 mL	0.2671 mL	0.5343 mL

Please select the appropriate solvent to prepare the stock solution, according to the solubility of the product in different solvents. Please use it as soon as possible.

Note: The dilution table applies only to solid products. For liquid products, please calculate the stock solution based on the stated concentration and/or density.

Reference

Pottayil Govindan Nair Sasikumar, et al. 1,3,4-oxadiazole and 1,3,4-thiadiazole derivatives as immunomodulators. WO2015033301A1.

Inhibitor · Natural Compounds · Compound Libraries · Recombinant Proteins

This product is for Research Use Only · Not for Human or Veterinary or Therapeutic Use

Tel:781-999-4286 E_mail:info@targetmol.com Address:34 Washington Street,Wellesley Hills,MA 02481