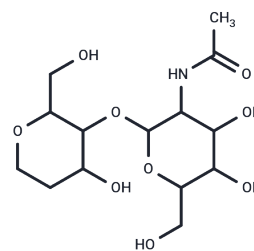


Chitin

Chemical Properties

| | |
|-------------------|---|
| CAS No. : | 1398-61-4 |
| Formula: | C ₁₄ H ₂₅ N ₁ O ₉ |
| Molecular Weight: | 351.352 |
| Storage: | Keep away from moisture Powder: -20°C for 3 years In solvent: -80°C for 1 year <small>Actual storage temperature shall be subject to the COA.</small> |



Biological Description

| | |
|---------------|--|
| Description | Chitin is a large, structural polysaccharide found in the cell walls of fungi, the exoskeletons of insects, and certain hard structures in fish and invertebrates. |
| Targets(IC50) | Others,NF-κB,Endogenous Metabolite,Antifungal |

Solubility Information

| | |
|------------|---|
| Solubility | DMSO: <1 mg/mL (insoluble or slightly soluble),Sonication is recommended. 0.1 M HCl: insoluble 0.1M NaOH: insoluble H2O: Insoluble, (< 1 mg/ml refers to the product slightly soluble or insoluble) |
|------------|---|

Preparing Stock Solutions

| | 1mg | 5mg | 10mg |
|-------|-----------|------------|------------|
| 1 mM | 2.8462 mL | 14.2308 mL | 28.4616 mL |
| 5 mM | 0.5692 mL | 2.8462 mL | 5.6923 mL |
| 10 mM | 0.2846 mL | 1.4231 mL | 2.8462 mL |
| 50 mM | 0.0569 mL | 0.2846 mL | 0.5692 mL |

Please select the appropriate solvent to prepare the stock solution, according to the solubility of the product in different solvents. Please use it as soon as possible.

Note: The dilution table applies only to solid products. For liquid products, please calculate the stock solution based on the stated concentration and/or density.

Reference

Chen W, Cao P, Liu Y, et al. Structural basis for directional chitin biosynthesis. Nature. 2022: 1-7.

Inhibitor · Natural Compounds · Compound Libraries · Recombinant Proteins

This product is for Research Use Only · Not for Human or Veterinary or Therapeutic Use

Tel:781-999-4286 E_mail:info@targetmol.com Address:34 Washington Street,Wellesley Hills,MA 02481