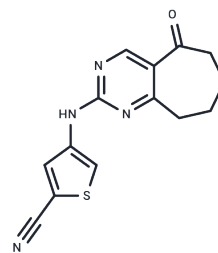


G6PDi-1

Chemical Properties

CAS No. :	2457232-14-1
Formula:	C ₁₄ H ₁₂ N ₄ O ₅
Molecular Weight:	284.34
Storage:	Powder: -20°C for 3 years In solvent: -80°C for 1 year Actual storage temperature shall be subject to the COA.



Biological Description

Description	G6PDi-1 is an effective G6PD inhibitor. It depletes NADPH and decreases inflammatory cytokine production.
Targets(IC50)	Others,Dehydrogenase
In vitro	G6PDi-1 effectively inhibits G6PD. Across a range of cultured cells, G6PDi-1 depletes NADPH most strongly in lymphocytes. In T cells but not macrophages, G6PDi-1 markedly decreases inflammatory cytokine production. In neutrophils, it suppresses respiratory burst.

Solubility Information

Solubility	DMSO: 25 mg/mL (87.92 mM),Sonication is recommended. (< 1 mg/ml refers to the product slightly soluble or insoluble)
------------	---

Preparing Stock Solutions

	1mg	5mg	10mg
1 mM	3.5169 mL	17.5846 mL	35.1692 mL
5 mM	0.7034 mL	3.5169 mL	7.0338 mL
10 mM	0.3517 mL	1.7585 mL	3.5169 mL
50 mM	0.0703 mL	0.3517 mL	0.7034 mL

Please select the appropriate solvent to prepare the stock solution, according to the solubility of the product in different solvents. Please use it as soon as possible.

Note: The dilution table applies only to solid products. For liquid products, please calculate the stock solution based on the stated concentration and/or density.

Reference

Ghergurovich J M , Juan C. García-Caaveras, Wang J , et al. A small molecule G6PD inhibitor reveals immune dependence on pentose phosphate pathway[J]. Nature Chemical Biology, 2020, 16(7):1-9.

Inhibitor · Natural Compounds · Compound Libraries · Recombinant Proteins

This product is for Research Use Only· Not for Human or Veterinary or Therapeutic Use

Tel:781-999-4286 E_mail:info@targetmol.com Address:34 Washington Street,Wellesley Hills,MA 02481