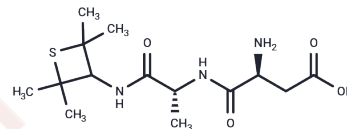


Alitame

Chemical Properties

CAS No. : 80863-62-3
 Formula: C₁₄H₂₅N₃O₄S
 Molecular Weight: 331.43
 Storage: Powder: -20°C for 3 years | In solvent: -80°C for 1 year
 Actual storage temperature shall be subject to the COA.



Biological Description

Description	Alitame is a high-intensity sweetener and sugar substitute widely used in biochemical experiments and drug synthesis research.
Targets(IC50)	Others,Amino Acids and Derivatives

Solubility Information

Solubility	DMSO: 120 mg/mL (362.07 mM),Sonication is recommended. (< 1 mg/ml refers to the product slightly soluble or insoluble)
------------	---

Preparing Stock Solutions

	1mg	5mg	10mg
1 mM	3.0172 mL	15.0861 mL	30.1723 mL
5 mM	0.6034 mL	3.0172 mL	6.0345 mL
10 mM	0.3017 mL	1.5086 mL	3.0172 mL
50 mM	0.0603 mL	0.3017 mL	0.6034 mL

Please select the appropriate solvent to prepare the stock solution, according to the solubility of the product in different solvents. Please use it as soon as possible.

Note: The dilution table applies only to solid products. For liquid products, please calculate the stock solution based on the stated concentration and/or density.

Reference

- Matsumoto H, et, al. [Simultaneous determination of neotame, alitame and aspartame in foods by HPLC]. Shokuhin Eiseigaku Zasshi. 2008 Feb;49(1):31-6. Japanese.
- Pereira S, et, al. Taste responsiveness of chimpanzees (*Pan troglodytes*) and black-handed spider monkeys (*Ateles geoffroyi*) to eight substances tasting sweet to humans. *Physiol Behav.* 2021 Sep 1;238:113470.
- Kim C, et, al. Solvent-free enzymatic synthesis of alitame precursor using eutectic substrate mixtures. *Enzyme Microb Technol.* 2001 May 7;28(7-8):611-616. doi: 10.1016/s0141-0229(01)00303-9.
- Chattopadhyay S, et, al. Artificial sweeteners - a review. *J Food Sci Technol.* 2014 Apr;51(4):611-21. doi: 10.1007/s13197-011-0571-1. Epub 2011 Oct 21.

Inhibitor · Natural Compounds · Compound Libraries · Recombinant Proteins

This product is for Research Use Only · Not for Human or Veterinary or Therapeutic Use

Tel: 781-999-4286 E_mail: info@targetmol.com Address: 34 Washington Street, Wellesley Hills, MA 02481