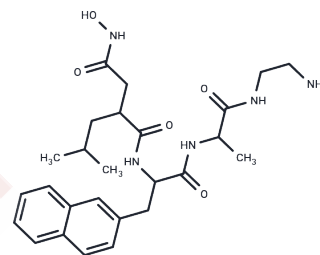


(S,S)-TAPI-1

Chemical Properties

CAS No. :	171235-71-5
Formula:	C ₂₆ H ₃₇ N ₅ O ₅
Molecular Weight:	499.6
Storage:	Powder: -20°C for 3 years In solvent: -80°C for 1 year Actual storage temperature shall be subject to the COA.



Biological Description

Description	(S,S)-TAPI-1, an isomer of TAPI-1, is a metalloproteinase (MMP) inhibitor and a TACE (ADAM17) inhibitor known for its potent inhibition of various cell surface protein shedding.
Targets(IC50)	MMP,Others

Preparing Stock Solutions

	1mg	5mg	10mg
1 mM	2.0016 mL	10.008 mL	20.016 mL
5 mM	0.4003 mL	2.0016 mL	4.0032 mL
10 mM	0.2002 mL	1.0008 mL	2.0016 mL
50 mM	0.040 mL	0.2002 mL	0.4003 mL

Please select the appropriate solvent to prepare the stock solution, according to the solubility of the product in different solvents. Please use it as soon as possible.

Note: The dilution table applies only to solid products. For liquid products, please calculate the stock solution based on the stated concentration and/or density.

Inhibitor · Natural Compounds · Compound Libraries · Recombinant Proteins

This product is for Research Use Only · Not for Human or Veterinary or Therapeutic Use

Tel:781-999-4286 E_mail:info@targetmol.com Address:34 Washington Street,Wellesley Hills,MA 02481