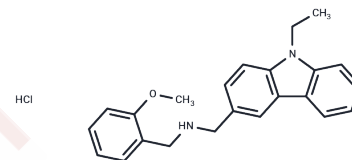


HLCL-61 hydrochloride

Chemical Properties

CAS No. :	1158279-20-9
Formula:	C ₂₃ H ₂₄ N ₂ O·ClH
Molecular Weight:	380.91
Storage:	Powder: -20°C for 3 years In solvent: -80°C for 1 year Actual storage temperature shall be subject to the COA.



Biological Description

Description	HLCL-61 hydrochloride (HLCL-61 HCL) is a potent and selective PRMT5 inhibitor for the treatment of acute myeloid leukemia.
Targets(IC50)	Apoptosis,Histone Methyltransferase
In vitro	HLCL-61 shows no inhibitory activity against the type I (PRMT1 and PRMT4) and type II (PRMT7) PRMT family members. HLCL-61 shows effective inhibition of symmetric arginine dimethylation (me ₂) of histones H3 and H4 in AML samples.Treatment of AML cell lines (MV4-11 and THP-1) and primary blasts with HLCL-61 also results in a decrease of cell viability. HLCL-61 is also effective in promoting apoptosis in MV4-11 and THP-1 cells after 48 h[1].
Cell Research	CD11b expression is tested by flow cytometry on cells treated with DMSO or HLCL-61 (25 and 50 μM) for 48 h.(Only for Reference)

Solubility Information

Solubility	DMSO: 50 mg/mL (131.26 mM),Heating is recommended. H ₂ O: < 1 mg/mL (insoluble or slightly soluble), Ethanol: 15 mg/mL (39.38 mM),Sonication is recommended. (< 1 mg/ml refers to the product slightly soluble or insoluble)
In vivo Formulation	10% DMSO+40% PEG300+5% Tween 80+45% Saline: 2 mg/mL (5.25 mM),Sonication is recommended. <i>Please add the solvents sequentially, clarifying the solution as much as possible before adding the next one. Dissolve by heating and/or sonication if necessary. Working solution is recommended to be prepared and used immediately. The formulation provided above is for reference purposes only. In vivo formulations may vary and should be modified based on specific experimental conditions.</i>

Preparing Stock Solutions

	1mg	5mg	10mg
1 mM	2.6253 mL	13.1265 mL	26.2529 mL
5 mM	0.5251 mL	2.6253 mL	5.2506 mL
10 mM	0.2625 mL	1.3126 mL	2.6253 mL
50 mM	0.0525 mL	0.2625 mL	0.5251 mL

Please select the appropriate solvent to prepare the stock solution, according to the solubility of the product in different solvents. Please use it as soon as possible.

Note: The dilution table applies only to solid products. For liquid products, please calculate the stock solution based on the stated concentration and/or density.

Reference

Tarighat SS, et al. Leukemia. 2016, 30(4):788-799.

Inhibitor · Natural Compounds · Compound Libraries · Recombinant Proteins

This product is for Research Use Only · Not for Human or Veterinary or Therapeutic Use

Tel:781-999-4286 E_mail:info@targetmol.com Address:34 Washington Street,Wellesley Hills,MA 02481