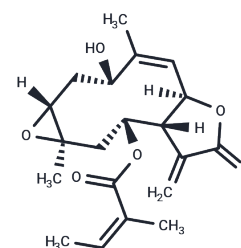


Leptocarpin

Chemical Properties

CAS No. :	73522-63-1
Formula:	C ₂₀ H ₂₆ O ₆
Molecular Weight:	362.42
Storage:	Powder: -20°C for 3 years In solvent: -80°C for 1 year Actual storage temperature shall be subject to the COA.



Biological Description

Description	Leptocarpin is a sesquiterpene lactone extracted from <i>Leptocarpha rivularis</i> .
Targets(IC50)	Others

Preparing Stock Solutions

	1mg	5mg	10mg
1 mM	2.7592 mL	13.7961 mL	27.5923 mL
5 mM	0.5518 mL	2.7592 mL	5.5185 mL
10 mM	0.2759 mL	1.3796 mL	2.7592 mL
50 mM	0.0552 mL	0.2759 mL	0.5518 mL

Please select the appropriate solvent to prepare the stock solution, according to the solubility of the product in different solvents. Please use it as soon as possible.

Note: The dilution table applies only to solid products. For liquid products, please calculate the stock solution based on the stated concentration and/or density.

Reference

- Bosio C, Tomasoni G, Martínez R, Olea AF, Carrasco H, Villena J. Cytotoxic and apoptotic effects of leptocarpin, a plant-derived sesquiterpene lactone, on human cancer cell lines. *Chem Biol Interact.* 2015 Dec 5;242:415-21. doi: 10.1016/j.cbi.2015.11.006. Epub 2015 Nov 10. PubMed PMID: 26562779.
- Martínez R, Kesternich V, Gutierrez E, Dölz H, Mansilla H. Conformational analysis and biological activity of leptocarpin and leptocarpin acetate. *Planta Med.* 1995 Apr;61(2):188-9. PubMed PMID: 7753932.
- El Marsni Z, Torres A, Varela RM, Molinillo JM, Casas L, Mantell C, Martinez de la Ossa EJ, Macias FA. Isolation of Bioactive Compounds from Sunflower Leaves (*Helianthus annuus* L.) Extracted with Supercritical Carbon Dioxide. *J Agric Food Chem.* 2015 Jul 22;63(28):6410-21. doi: 10.1021/acs.jafc.5b02261. Epub 2015 Jul 7. PubMed PMID: 26151222.
- Macías FA, Torres A, Galindo JL, Varela RM, Alvarez JA, Molinillo JM. Bioactive terpenoids from sunflower leaves cv. Peredovick. *Phytochemistry.* 2002 Nov;61(6):687-92. PubMed PMID: 12423890.

Inhibitor · Natural Compounds · Compound Libraries · Recombinant Proteins

This product is for Research Use Only · Not for Human or Veterinary or Therapeutic Use

Tel:781-999-4286 E_mail:info@targetmol.com Address:34 Washington Street,Wellesley Hills,MA 02481