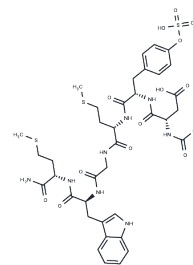


## CCK (26-31) (sulfated)

## Chemical Properties

CAS No. :	89911-65-9
Formula:	C38H50N8O13S3
Molecular Weight:	923.04
Storage:	Keep away from moisture Powder: -20°C for 3 years   In solvent: -80°C for 1 year <small>Actual storage temperature shall be subject to the COA.</small>



## Biological Description

Description	CCK (26-31) is an N-terminal fragment of CCK, a peptide hormone found in the intestine and brain that stimulates digestion, mediates satiety, and is involved in anxiety. The sulfated form of CCK (26-31) inhibits binding of [125I]CCK-33 to guinea pig cortical membranes by 21% when used at a concentration of 0.1 mM.
Targets(IC50)	Cholecystokinin Receptor

## Solubility Information

Solubility	H2O: 1 mg/mL (1.08 mM), Sonication is recommended. (< 1 mg/ml refers to the product slightly soluble or insoluble)
------------	---

## Preparing Stock Solutions

	1mg	5mg	10mg
1 mM	1.0834 mL	5.4169 mL	10.8338 mL
5 mM	0.2167 mL	1.0834 mL	2.1668 mL
10 mM	0.1083 mL	0.5417 mL	1.0834 mL
50 mM	0.0217 mL	0.1083 mL	0.2167 mL

Please select the appropriate solvent to prepare the stock solution, according to the solubility of the product in different solvents. Please use it as soon as possible.

Note: The dilution table applies only to solid products. For liquid products, please calculate the stock solution based on the stated concentration and/or density.

### Reference

Raybould, H.E., and Lloyd, K.C. Integration of postprandial function in the proximal gastrointestinal tract. Role of CCK and sensory pathways Ann. N.Y. Acad. Sci. 713(1), 143-156 (1994).

Ondetti, M.A., Plu?ec, J., Sabo, E.F., et al. Synthesis of cholecystokinin-pancreozymin. I. The C-terminal dodecapeptide J. Am. Chem. Soc. 92(1), 195-199 (1970).

Knight, M., Tamminga, C.A., Steardo, L., et al. Cholecystokinin-octapeptide fragments: Binding to brain cholecystokinin receptors Eur. J. Pharmacol. 105(1-2), 49-55 (1984).

**Inhibitor · Natural Compounds · Compound Libraries · Recombinant Proteins**

This product is for Research Use Only· Not for Human or Veterinary or Therapeutic Use

Tel:781-999-4286 E\_mail:info@targetmol.com Address:34 Washington Street,Wellesley Hills,MA 02481