

## [Sar1, Ile8]-Angiotensin II

## Chemical Properties

CAS No. : 37827-06-8

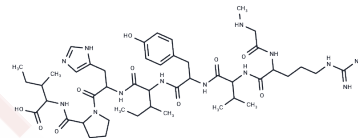
Formula: C<sub>46</sub>H<sub>73</sub>N<sub>13</sub>O<sub>10</sub>

Molecular Weight: 968.15

Keep away from moisture

Storage: Powder: -20°C for 3 years | In solvent: -80°C for 1 year

Actual storage temperature shall be subject to the COA.



## Biological Description

Description	[Sar1, Ile8]-Angiotensin II(3TFA) is a peptide that has multiple effects on vascular smooth muscle.
Targets(IC50)	RAAS

## Solubility Information

Solubility	DMSO: 10 mM, Sonication is recommended. (< 1 mg/ml refers to the product slightly soluble or insoluble)
------------	--

## Preparing Stock Solutions

	1mg	5mg	10mg
1 mM	1.0329 mL	5.1645 mL	10.329 mL
5 mM	0.2066 mL	1.0329 mL	2.0658 mL
10 mM	0.1033 mL	0.5164 mL	1.0329 mL
50 mM	0.0207 mL	0.1033 mL	0.2066 mL

Please select the appropriate solvent to prepare the stock solution, according to the solubility of the product in different solvents. Please use it as soon as possible.

Note: The dilution table applies only to solid products. For liquid products, please calculate the stock solution based on the stated concentration and/or density.

### Reference

Griendling KK, et al. Angiotensin II stimulates NADH and NADPH oxidase activity in cultured vascular smooth muscle cells. *Circ Res.* 1994 Jun;74(6):1141-8.

Ohta H , Ishida Y , Hara H , et al. [Effect of [Sar1, ile8] angiotensin II and SW 14,225 in renovascular hypertension--comparison between unilateral and bilateral renal artery stenosis (author's transl)]]. *Nippon Jinzo Gakkai Shi*, 1982, 24(1):79-88.

Chan R K W , Chan Y S , Wong T M . Effects of [sar1, ile8]-angiotensin II on rostral ventrolateral medulla neurons and blood pressure in spontaneously hypertensive rats]]. *Neuroscience*, 1994, 63(1):267-277.

**Inhibitor · Natural Compounds · Compound Libraries · Recombinant Proteins**

This product is for Research Use Only · Not for Human or Veterinary or Therapeutic Use

Tel:781-999-4286 E\_mail:info@targetmol.com Address:34 Washington Street,Wellesley Hills,MA 02481