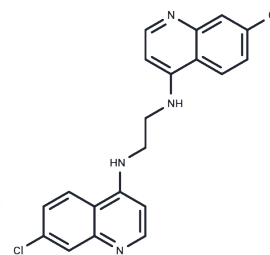


RE-640

Chemical Properties

CAS No. : 140926-75-6
 Formula: C₂₀H₁₆Cl₂N₄
 Molecular Weight: 383.27
 Storage: Powder: -20°C for 3 years | In solvent: -80°C for 1 year
Actual storage temperature shall be subject to the COA.



Biological Description

Description	NSC-5844 (RE-640) (RE640) is a bisquinoline compound with C-C chemokine receptor type 1 (CCR1)-agonistic activities.
Targets(IC50)	CCR,Parasite
Kinase Assay	Assay of PKC Activity : Assay mixtures contain 0.2 mg/mL peptide-gamma, 10 μM MgCl ₂ , 0.6 mM CaCl ₂ , 10 μM [γ- ³² P]ATP, 1.25 mg/mL phosphatidylserine and 1.25 ng/mL phorbol 12-myristate 13-acetate in 20 mM Hepes (pH 7.5), 2 mM EDTA, 1 mM dithiothreitol and 0.02% (w/v) Triton X-100. Peptide-γ is a synthetic peptide, GPRPLFCRKGSLRQKW, resembling the PKC-γ pseudosubstrate site, except that a serine residue replaces the pseudosubstrate alanine, converting the peptide from an inhibitor into a substrat. The assays are started by the addition of 2.5 m-units of enzyme, incubated at 30 °C for 10 min and terminated by spotting on to P81 paper, followed by extensive washing in 75 mM orthophosphoric acid. The papers are then washed in ethanol, dried, and incorporated radioactivity is determined by liquidscintillation spectroscopy.

Solubility Information

Solubility	DMSO: Slightly soluble, (< 1 mg/ml refers to the product slightly soluble or insoluble)
------------	--

Preparing Stock Solutions

	1mg	5mg	10mg
1 mM	2.6091 mL	13.0456 mL	26.0913 mL
5 mM	0.5218 mL	2.6091 mL	5.2183 mL
10 mM	0.2609 mL	1.3046 mL	2.6091 mL
50 mM	0.0522 mL	0.2609 mL	0.5218 mL

Please select the appropriate solvent to prepare the stock solution, according to the solubility of the product in different solvents. Please use it as soon as possible.

Note: The dilution table applies only to solid products. For liquid products, please calculate the stock solution based on the stated concentration and/or density.

Reference

Zhang H, et al. Biomed PharmacOthers. 2008 Feb;62(2):65-9.

Inhibitor · Natural Compounds · Compound Libraries · Recombinant Proteins

This product is for Research Use Only · Not for Human or Veterinary or Therapeutic Use

Tel:781-999-4286 E_mail:info@targetmol.com Address:34 Washington Street,Wellesley Hills,MA 02481