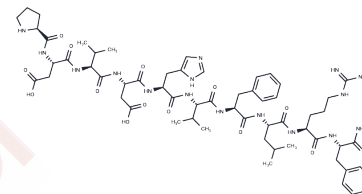


## Schistoflrfamide

## Chemical Properties

CAS No. :	121801-61-4
Formula:	C59H86N16O14
Molecular Weight:	1243.41
Storage:	Keep away from moisture Powder: -20°C for 3 years   In solvent: -80°C for 1 year <small>Actual storage temperature shall be subject to the COA.</small>



## Biological Description

Description	Schistoflrfamide is a locust myosuppressin, it is isolated from the thoracic nervous system of the locust Schistocerca gregaria.
-------------	--

## Solubility Information

Solubility	DMSO: Soluble, ( $< 1$ mg/ml refers to the product slightly soluble or insoluble)
------------	--

## Preparing Stock Solutions

	1mg	5mg	10mg
1 mM	0.8042 mL	4.0212 mL	8.0424 mL
5 mM	0.1608 mL	0.8042 mL	1.6085 mL
10 mM	0.0804 mL	0.4021 mL	0.8042 mL
50 mM	0.0161 mL	0.0804 mL	0.1608 mL

Please select the appropriate solvent to prepare the stock solution, according to the solubility of the product in different solvents. Please use it as soon as possible.

Note: The dilution table applies only to solid products. For liquid products, please calculate the stock solution based on the stated concentration and/or density.

### Reference

Sedra L, Haddad AS, Lange AB. Myoinhibitors controlling oviduct contraction within the female blood-gorging insect, *Rhodnius prolixus*. *Gen Comp Endocrinol*. 2015 Jan 15;211:62-8. doi: 10.1016/j.ygcen.2014.11.019. Epub 2014 Dec 4. PubMed PMID: 25482544.

Robb S, Evans P. THE MODULATORY EFFECT OF SCHISTOFLRFamide ON HEART AND SKELETAL MUSCLE IN THE LOCUST *SCHISTOCERCA GREGARIA*. *J Exp Biol*. 1994 Dec;197(1):437-42. PubMed PMID: 9318083.

Hill SR, Orchard I. In vitro analysis of the digestive enzymes amylase and alpha-glucosidase in the midguts of *Locusta migratoria* L. in response to the myosuppressin, SchistoFLRFamide. *J Insect Physiol*. 2005 Jan;51(1):1-9. PubMed PMID: 15686640.

Schoofs L, Holman GM, Paemen L, Veelaert D, Amelinckx M, De Loof A. Isolation, identification, and synthesis of PDVDHFLRFamide (SchistoFLRFamide) in *Locusta migratoria* and its association with the male accessory glands, the salivary glands, the heart, and the oviduct. *Peptides*. 1993 May-Jun;14(3):409-21. PubMed PMID: 7687352.

**Inhibitor · Natural Compounds · Compound Libraries · Recombinant Proteins**

This product is for Research Use Only · Not for Human or Veterinary or Therapeutic Use

Tel:781-999-4286 E\_mail:info@targetmol.com Address:34 Washington Street,Wellesley Hills,MA 02481