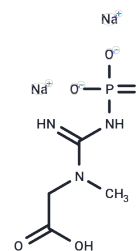


## Phosphocreatine disodium

## Chemical Properties

CAS No. :	922-32-7
Formula:	C <sub>4</sub> H <sub>8</sub> N <sub>3</sub> Na <sub>2</sub> O <sub>5</sub> P
Molecular Weight:	255.08
Storage:	Store under nitrogen Powder: -20°C for 3 years   In solvent: -80°C for 1 year <small>Actual storage temperature shall be subject to the COA.</small>



## Biological Description

Description	Phosphocreatine disodium (Phosphocreatine disodium salt) is a phosphorylated creatine molecule that serves as a rapidly mobilizable reserve of high-energy phosphates in muscle, skeletal, and brain.
Targets(IC50)	Apoptosis,ERK,MAPK,Akt,Mitochondrial Metabolism,Endogenous Metabolite,ROS Kinase

## Solubility Information

Solubility	H <sub>2</sub> O: 247.5 mg/mL (970.28 mM) DMSO: Slightly soluble, ( $< 1$ mg/ml refers to the product slightly soluble or insoluble)
------------	--

## Preparing Stock Solutions

	1mg	5mg	10mg
1 mM	3.9203 mL	19.6017 mL	39.2034 mL
5 mM	0.7841 mL	3.9203 mL	7.8407 mL
10 mM	0.392 mL	1.9602 mL	3.9203 mL
50 mM	0.0784 mL	0.392 mL	0.7841 mL

Please select the appropriate solvent to prepare the stock solution, according to the solubility of the product in different solvents. Please use it as soon as possible.

Note: The dilution table applies only to solid products. For liquid products, please calculate the stock solution based on the stated concentration and/or density.

## Reference

Schlattner, U et al. Biochimica et Biophysica Acta (BBA) - Molecular Basis of Disease. 1762 (2): 164-180.

**Inhibitor · Natural Compounds · Compound Libraries · Recombinant Proteins**

This product is for Research Use Only · Not for Human or Veterinary or Therapeutic Use

Tel:781-999-4286 E\_mail:info@targetmol.com Address:34 Washington Street,Wellesley Hills,MA 02481