

Iprindole

Chemical Properties

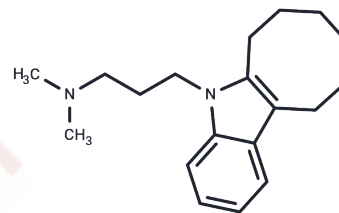
CAS No. : 5560-72-5

Formula: C₁₉H₂₈N₂

Molecular Weight: 284.44

Storage: Pure form: -20°C for 3 years | In solvent: -80°C for 1 year

Actual storage temperature shall be subject to the COA.



Biological Description

| | |
|---------------|--|
| Description | Iprindole, a tricyclic indole antidepressant, is a dual weak inhibitor of noradrenaline and 5-HT uptake [1]. |
| Targets(IC50) | 5-HT Receptor |
| In vivo | Iprindole exhibited less than 50% inhibition in the uptake of both noradrenaline and 5-hydroxytryptamine (5-HT) at a dosage of 100 mg/kg intraperitoneally (i.p.) [1]. |

Solubility Information

| | |
|---------------------|---|
| Solubility | DMSO: 115 mg/mL (404.3 mM), Sonication is recommended. H ₂ O: < 0.1 mg/mL (insoluble) (< 1 mg/ml refers to the product slightly soluble or insoluble) |
| In vivo Formulation | 10% DMSO+90% Corn Oil: 4 mg/mL (14.06 mM), Sonication is recommended. <i>Please add the solvents sequentially, clarifying the solution as much as possible before adding the next one. Dissolve by heating and/or sonication if necessary. Working solution is recommended to be prepared and used immediately. The formulation provided above is for reference purposes only. In vivo formulations may vary and should be modified based on specific experimental conditions.</i> |

Preparing Stock Solutions

| | 1mg | 5mg | 10mg |
|-------|------------|------------|-------------|
| 1 mM | 3.5157 mL | 17.5784 mL | 35.1568 mL |
| 5 mM | 0.7031 mL | 3.5157 mL | 7.0314 mL |
| 10 mM | 0.3516 mL | 1.7578 mL | 3.5157 mL |
| 50 mM | 0.0703 mL | 0.3516 mL | 0.7031 mL |

Please select the appropriate solvent to prepare the stock solution, according to the solubility of the product in different solvents. Please use it as soon as possible.

Note: The dilution table applies only to solid products. For liquid products, please calculate the stock solution based on the stated concentration and/or density.

Reference

M I Gluckman, et al. The pharmacology of iprindole, a new antidepressant. *Psychopharmacologia*. 1969;15(3): 169-85.

Inhibitor · Natural Compounds · Compound Libraries · Recombinant Proteins

This product is for Research Use Only · Not for Human or Veterinary or Therapeutic Use

Tel:781-999-4286 E_mail:info@targetmol.com Address:34 Washington Street,Wellesley Hills,MA 02481