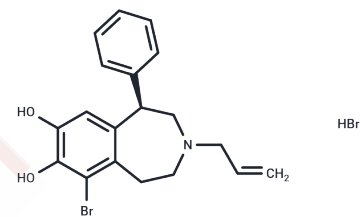


## R(+)-6-Bromo-APB HBr

## Chemical Properties

CAS No. :	139689-19-3
Formula:	C <sub>19</sub> H <sub>21</sub> Br <sub>2</sub> N <sub>2</sub> O <sub>2</sub>
Molecular Weight:	455.18
Storage:	Powder: -20°C for 3 years   In solvent: -80°C for 1 year Actual storage temperature shall be subject to the COA.



## Biological Description

Description	R(+)-6-Bromo-APB HBr is used as a D1 Dopamine receptor agonist.
Targets(IC50)	Others,Dopamine Receptor

## Preparing Stock Solutions

	1mg	5mg	10mg
1 mM	2.1969 mL	10.9847 mL	21.9693 mL
5 mM	0.4394 mL	2.1969 mL	4.3939 mL
10 mM	0.2197 mL	1.0985 mL	2.1969 mL
50 mM	0.0439 mL	0.2197 mL	0.4394 mL

Please select the appropriate solvent to prepare the stock solution, according to the solubility of the product in different solvents. Please use it as soon as possible.

Note: The dilution table applies only to solid products. For liquid products, please calculate the stock solution based on the stated concentration and/or density.

## Reference

- Navakkode S, Sajikumar S, Frey JU. Synergistic requirements for the induction of dopaminergic D1/D5-receptor-mediated LTP in hippocampal slices of rat CA1 in vitro. *Neuropharmacology*. 2007 Jun;52(7):1547-54. Epub 2007 Mar 12. PubMed PMID: 17433377.
- Mockett BG, Brooks WM, Tate WP, Abraham WC. Dopamine D1/D5 receptor activation fails to initiate an activity-independent late-phase LTP in rat hippocampus. *Brain Res*. 2004 Sep 17;1021(1):92-100. PubMed PMID: 15328036.
- Azaryan AV, Clock BJ, Rosenberger JG, Cox BM. Transient upregulation of mu opioid receptor mRNA levels in nucleus accumbens during chronic cocaine administration. *Can J Physiol Pharmacol*. 1998 Mar;76(3):278-83. PubMed PMID: 9673791.
- Sun MH, Ishine T, Lee TJ. Dopamine constricts porcine pial veins. *Eur J Pharmacol*. 1997 Sep 10;334(2-3):165-71. PubMed PMID: 9369345.

**Inhibitor · Natural Compounds · Compound Libraries · Recombinant Proteins**

This product is for Research Use Only · Not for Human or Veterinary or Therapeutic Use

Tel:781-999-4286 E\_mail:info@targetmol.com Address:34 Washington Street,Wellesley Hills,MA 02481