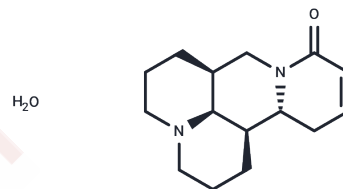


Sophocarpine monohydrate

Chemical Properties

CAS No. : 145572-44-7
 Formula: C₁₅H₂₂N₂O
 Molecular Weight: 246.35
 Storage: Powder: -20°C for 3 years | In solvent: -80°C for 1 year
Actual storage temperature shall be subject to the COA.



Biological Description

Description	Sophocarpine monohydrate, a major ingredient of Sophora alopecuroides, has a wide range of pharmacological effects.
Targets(IC50)	Apoptosis,ERK,NF-κB,MEK,Akt,AMPK,Autophagy,Influenza Virus,PI3K
In vitro	Sophocarpine exerts anti-cachectic effects by inhibiting TNF-α and IL-6 production in both RAW264.7 cells and murine primary macrophages. [1] Sophocarpine also shows antiviral activity by inhibiting HHV-6 replication in Molt-3 cells. [2] In addition, Sophocarpine is a potent blocker of HERG K ⁺ channels with an IC ₅₀ of about 200 nM. [3]
In vivo	Administration of 50 mg/kg/d sophocarpine for 5 days from the onset of cachexia does not inhibit the tumor growth but results in attenuation of cachexia symptoms in colon26 adenocarcinoma xenograft BALB/c mice. [1] LD ₅₀ : Mice 63.94 mg/kg (i.v.) [4]

Solubility Information

Solubility	DMSO: 60 mg/mL (243.56 mM),Sonication is recommended. (< 1 mg/ml refers to the product slightly soluble or insoluble)
In vivo Formulation	10% DMSO+40% PEG300+5% Tween 80+45% Saline: 2 mg/mL (8.12 mM),Sonication is recommended. <i>Please add the solvents sequentially, clarifying the solution as much as possible before adding the next one. Dissolve by heating and/or sonication if necessary. Working solution is recommended to be prepared and used immediately. The formulation provided above is for reference purposes only. In vivo formulations may vary and should be modified based on specific experimental conditions.</i>

Preparing Stock Solutions

	1mg	5mg	10mg
1 mM	4.0593 mL	20.2963 mL	40.5927 mL
5 mM	0.8119 mL	4.0593 mL	8.1185 mL
10 mM	0.4059 mL	2.0296 mL	4.0593 mL
50 mM	0.0812 mL	0.4059 mL	0.8119 mL

Please select the appropriate solvent to prepare the stock solution, according to the solubility of the product in different solvents. Please use it as soon as possible.

Note: The dilution table applies only to solid products. For liquid products, please calculate the stock solution based on the stated concentration and/or density.

Reference

Zhang Y, et al. *Int Immunopharmacol*, 2008, 8(13-14), 1767-1772.

Qavi HB, et al. *Phytother Res*, 2002, 16(2), 154-156.

Inhibitor · Natural Compounds · Compound Libraries · Recombinant Proteins

This product is for Research Use Only · Not for Human or Veterinary or Therapeutic Use

Tel:781-999-4286 E_mail:info@targetmol.com Address:34 Washington Street,Wellesley Hills,MA 02481