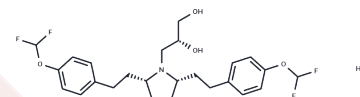


VMAT2-IN-I HCL

Chemical Properties

CAS No. :	1436695-49-6
Formula:	C ₂₅ H ₃₂ ClF ₄ NO ₄
Molecular Weight:	521.97
Storage:	Powder: -20°C for 3 years In solvent: -80°C for 1 year Actual storage temperature shall be subject to the COA.



Biological Description

Description	VMAT2-IN-I HCL is an inhibitor of vesicular monoamine transporter-2. It also has 15- fold greater affinity than GZ- 793A.
Targets(IC50)	Others, Monoamine Transporter

Preparing Stock Solutions

	1mg	5mg	10mg
1 mM	1.9158 mL	9.5791 mL	19.1582 mL
5 mM	0.3832 mL	1.9158 mL	3.8316 mL
10 mM	0.1916 mL	0.9579 mL	1.9158 mL
50 mM	0.0383 mL	0.1916 mL	0.3832 mL

Please select the appropriate solvent to prepare the stock solution, according to the solubility of the product in different solvents. Please use it as soon as possible.

Note: The dilution table applies only to solid products. For liquid products, please calculate the stock solution based on the stated concentration and/or density.

Reference

- Citrome L. Reprint of: Clinical management of tardive dyskinesia: Five steps to success. J Neurol Sci. 2018 Jun 15; 389:61-66. doi: 10.1016/j.jns.2018.02.037. Epub 2018 Feb 28. Review. PubMed PMID: 29519687.
- Dean M, Sung VW. Review of deutetrabenazine: a novel treatment for chorea associated with Huntington's disease. Drug Des Devel Ther. 2018 Feb 15;12:313-319. doi: 10.2147/DDDT.S138828. eCollection 2018. Review. PubMed PMID: 29497277; PubMed Central PMCID: PMC5818866.
- Hauser RA, Truong D. Tardive dyskinesia: Out of the shadows. J Neurol Sci. 2018 Jun 15;389:1-3. doi: 10.1016/j.jns.2018.02.009. Epub 2018 Feb 5. Review. PubMed PMID: 29449008.
- Scorr LM, Factor SA. VMAT2 inhibitors for the treatment of tardive dyskinesia. J Neurol Sci. 2018 Jun 15;389:43-47. doi: 10.1016/j.jns.2018.02.006. Epub 2018 Feb 5. Review. PubMed PMID: 29433808.

Inhibitor · Natural Compounds · Compound Libraries · Recombinant Proteins

This product is for Research Use Only · Not for Human or Veterinary or Therapeutic Use

Tel:781-999-4286 E_mail:info@targetmol.com Address:34 Washington Street,Wellesley Hills,MA 02481