

Kaempferol-7,4'-dimethyl ether

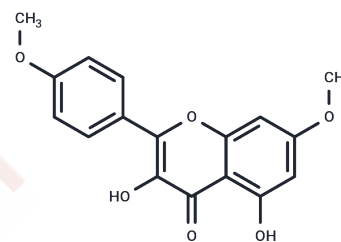
Chemical Properties

CAS No. : 15486-33-6

Formula: C17H14O6

Molecular Weight: 314.29

Storage: Store at low temperature, Keep away from direct sunlight, Keep away from moisture
 Powder: -20°C for 3 years | In solvent: -80°C for 1 year
 Actual storage temperature shall be subject to the COA.



Biological Description

Description	Kaempferol-7,4'-dimethyl ether, isolated from the rhizomes of Zingiber phillipseae, exhibits antioxidant activity against S. aureus and E. coli with MICs of 200 and 225 µg/ml, respectively.
Targets(IC50)	Antioxidant, Antifection, Phosphatase
In vitro	The dichloromethane extract of Kaempferol-7,4'-dimethyl ether was shown to be non-toxic with LC50 for acute and toxic levels at 9,732 ppm and 562 ppm, respectively. Kaempferol-7,4'-dimethyl ether showed higher antioxidant activity than butylated hydroxytoluene but lower than dichloromethane extract of Zingiber officinale. Kaempferol-7,4'-dimethyl ether was negative toward Candida albicans[1].

Preparing Stock Solutions

	1mg	5mg	10mg
1 mM	3.1818 mL	15.9089 mL	31.8177 mL
5 mM	0.6364 mL	3.1818 mL	6.3635 mL
10 mM	0.3182 mL	1.5909 mL	3.1818 mL
50 mM	0.0636 mL	0.3182 mL	0.6364 mL

Please select the appropriate solvent to prepare the stock solution, according to the solubility of the product in different solvents. Please use it as soon as possible.

Note: The dilution table applies only to solid products. For liquid products, please calculate the stock solution based on the stated concentration and/or density.

Reference

Tan Wei Hsiang, Mashitah Yusoff. Chemical and biological studies of Zingiber phillipseae rhizomes extract. International Journal of Pharma & Bio Sciences,2012, 3(4): 631-7.

Teeratad, et al. Inhibition of nitric oxide production by compounds from Boesenbergia longiflora using lipopolysaccharide-stimulated RAW264.7 macrophage cells.[J]. Songklanakarin Journal of Science & Technology, 2013.

Inhibitor · Natural Compounds · Compound Libraries · Recombinant Proteins

This product is for Research Use Only· Not for Human or Veterinary or Therapeutic Use

Tel:781-999-4286 E_mail:info@targetmol.com Address:34 Washington Street,Wellesley Hills,MA 02481