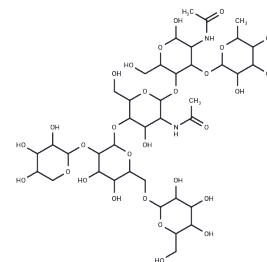


Bromelain

Chemical Properties

CAS No. :	9001-00-7
Formula:	C39H66N2O29
Molecular Weight:	1026.942
Storage:	Powder: -20°C for 3 years In solvent: -80°C for 1 year Actual storage temperature shall be subject to the COA.



Biological Description

Description	Bromelain is an anti-inflammatory drug derived from pineapple stem. It acts through down-regulation of plasma kininogen, degradation of advanced glycation end-product receptors, inhibition of Prostaglandin E2 expression, and regulation of angiogenic biomarkers as well as antioxidant action upstream in the COX-pathway.
Targets(IC50)	Apoptosis
In vivo	Bromelain (40 mg/kg; i.p.; daily; for 7 days; male SD rats) pretreatment reduces the motor dysfunction in the parkinsonian rat model of Parkinson's disease. 6-OHDA injection resulted in a marked motor impairment which is prevented by pretreatment with Bromelain prior to the lesion [1].

Solubility Information

Solubility	DMSO: 3.33 mg/mL (3.24 mM), Sonication is recommended. (< 1 mg/ml refers to the product slightly soluble or insoluble)
------------	---------------------------------------------------------------------------------------------------------------------------

Preparing Stock Solutions

	1mg	5mg	10mg
1 mM	0.9738 mL	4.8688 mL	9.7377 mL
5 mM	0.1948 mL	0.9738 mL	1.9475 mL
10 mM	0.0974 mL	0.4869 mL	0.9738 mL
50 mM	0.0195 mL	0.0974 mL	0.1948 mL

Please select the appropriate solvent to prepare the stock solution, according to the solubility of the product in different solvents. Please use it as soon as possible.

Note: The dilution table applies only to solid products. For liquid products, please calculate the stock solution based on the stated concentration and/or density.

Reference

Adu TS, et al. Effects of bromelain on motor responses following intra-medial forebrain bundle 6-OHDA injection in rat model of parkinsonism. Metab Brain Dis. 2019 Jul 22.

Pavan R, et al. Properties and therapeutic application of bromelain: a review. Biotechnol Res Int. 2012;2012: 976203.

Inhibitor · Natural Compounds · Compound Libraries · Recombinant Proteins

This product is for Research Use Only· Not for Human or Veterinary or Therapeutic Use

Tel:781-999-4286 E_mail:info@targetmol.com Address:34 Washington Street,Wellesley Hills,MA 02481